



In March, we wrapped up our three data science trainings for the year! We are thrilled more Arctic researchers gained an great deal of knowledge in both R and Python in the sessions we hosted. Cheers to the end of our data science trainings for this year! Our team can't wait to teach a new cohort of Arctic researchers next year.

Moving into April, operations at the Arctic Data Center remain robust! We're thrilled to announce the recent launch of **Metacatui 2.28.0**, featuring exciting new enhancements tailored to help researchers in our repository's data catalog. Among the highlights is the introduction of a new file hierarchy view that allows users to navigate through the organized file system of data package. Additionally, our latest release has enhanced functionalities within the Cesium map, including a new location search feature, improved data layer search, and categorization. You can dive deeper into these updates through our portal for the [Permafrost Discovery Gateway](#) and discover more about this release [here](#).

We're thrilled for more enhancements to release in the future!

As we continue into spring, there's more excitement on the horizon with the upcoming 2024 Community Survey! Learn more below.

A promotional banner for the Arctic Data Center 2024 Community Survey. On the left, a laptop screen displays the survey title and details. The background is a light teal color with abstract white wave-like patterns. The text "Call for input!" is prominently displayed in a large, bold, dark blue font. Below it, a paragraph of text invites the research community to share insights. At the bottom right, the Arctic Data Center logo is shown next to the text "Open until June 28, 2024".

Arctic Data Center 2024 Community Survey

The Arctic Data Center is conducting a survey of the Arctic research community to develop a better understanding of the datasets, formats, tools, workflows, and services that support Arctic research collaboration as well as the management and use of Arctic data. Here are some of the Arctic to include sub-Arctic regions and upper ocean, including the "West pole".

Survey responses will enable a better understanding of the points of connection enabling collaboration, identify forums where diverse segments of the community convene and communicate, and provide insight into the network of data repositories where Arctic data are stored. Input provided will also be used to drive future courses, workshops, and other support programming offered by Arctic Data Center. Responses will be anonymized and available to the public after collection.

The survey is open to all individuals who engage in Arctic research activities and we welcome diverse perspectives across

Call for input!

Attention Arctic research community! We want to hear from you. Share your insights on how we can make the Arctic Data Center even better or let us know what we're doing right. Your feedback matters!

Open until June 28, 2024

The Arctic Data Center logo, featuring a stylized green and blue wave icon next to the text "ARCTIC Data Center".

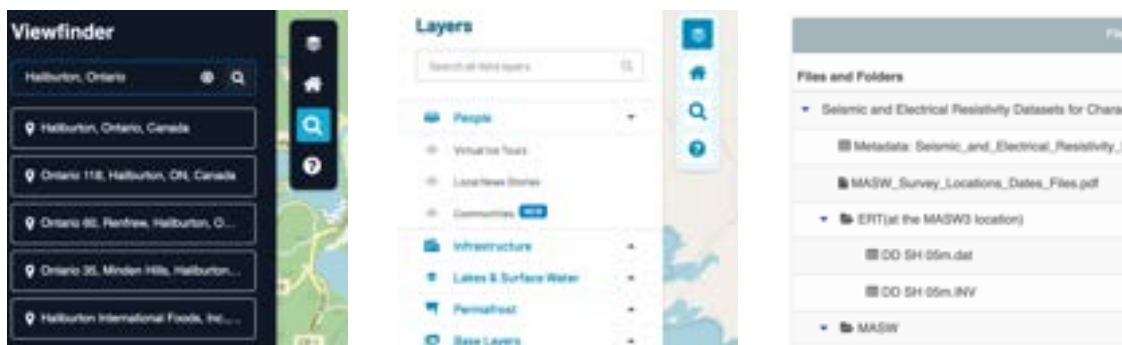
2024 Arctic Data Center Community Survey

Attention Arctic research community! The Arctic Data Center is calling Arctic researchers to share their valuable feedback and insights to explore ways to enhance the repository to better meet the needs of the community. We highly encourage those who have submitted data to the repository in the past, have attended one of our data science trainings, used our tools and/or services, and beyond to take this survey.

It will take about 10-15 minutes to complete and all responses will remain anonymous. For more information, please visit the survey link and if you have any questions to please reach out via email to info@arcticdata.io. We highly encourage you to circle this survey to any colleagues!

[Link to Community Survey](#)

Some of the Metacatui 2.28.0 Features



See these new features in action! Click on either button below to experience the new enhancements of Metacatui 2.28.0 in the Arctic Data Center and one of our portals.

[Arctic Data Center](#)

[Permafrost Discovery Gateway Portal](#)

Arctic Data Center Data Science Courses



Our data science courses for 2024 came to an end this March. We're grateful for the opportunity to advance the skills of approximately 50 Arctic researchers in both R and Python, while continuously refining our learning materials to align with the latest advancements in the data science field. In our most recent session, [Scalable and Computationally Reproducible Approaches to Arctic Research](#), we successfully incorporated new sections on Docker, Zarr, containers, and more to the benefit of our participants. We hope next year we further develop our learning materials and aim for more Arctic researchers to join us if possible.

March 25th - 29th, 2024

Scalable and Computationally Reproducible Approaches to Arctic Research

This in-person workshop at NCEAS in Santa Barbara provided an overview of advanced topics in computationally reproducible research in Python, including software and techniques for those working with very large datasets. Participants from diverse Arctic regions joined us for this engaging week, providing a rich exchange of experiences. Additionally, our training team had the opportunity to bond during this week!



February 26th - March 1st, 2024

Reproducible Practices for Arctic Research Using R

This virtual course gathered Arctic researchers with proficient programming skills in R to join us in expanding their expertise. We offered a background in both the theory and practice of reproducible research, spanning all portions of the research lifecycle, from ethical

data collection following the [CARE](#) principles to engage with local stakeholders, to data publishing. All in all, participants gained valuable insights and knowledge.

January 22nd - 26th, 2024

Fundamentals of Qualitative and Quantitative Data Management for Arctic Research

The Arctic Data Center, in collaboration with the NCEAS Learning Hub, had the privilege of assisting and teaching Arctic researchers in our first data science course in Santa Barbara, CA. The workshop training exceeded the expectations of all participants, marking it a real success for our team!



Check out the learning materials!

If you are interested in participating in future data science courses, keep your eyes peeled! Applications will open later in late summer and early fall and should you have any inquiries, please feel free to reach out.



March 5-7, 2024

Navigating the New Arctic Community Meeting

ADC Director, Matt Jones, and Community Engagement and Outreach Coordinator, Angie Garcia, traveled to Washington, DC, in March to participate in the 2024 Navigating the New Arctic (NNA) Community Meeting. They hosted two parallel sessions on data submissions to the repository. Our favorite part was connecting with many of our collaborators within NNA and learn more about how we can serve the greater community with our data management practices.

IARPC Collaborations: Updating the 2025-2026 Implementation Plan for the Arctic Research Plan



IARPC Collaborations is looking to create their next two-year implementation plan for the Arctic Research Plan. They want to hear from you: What are the most pressing Arctic research priorities for the next two years? [Please check out this form to insert your feedback.](#)

Upcoming Opportunities

[Job - ArcticNet Science Program Officer](#)

[Job - Science Analyst in Arctic Sciences Section at the Office of Polar Programs](#)

[Webinar - United States Antarctic Program Data Center](#)

Event Date: May 9, 2024

Event Time: 2:00 PM U.S. Eastern Time

The session will provide an introduction on how to access and contribute data to USAP-DC, and discuss some best practices for FAIR (Findable, Accessible, Interoperable, Reuseable) data submissions. The session will be held on Zoom and recorded. Participants can register here: <https://forms.gle/9f9oZkga6avMPvKJ8> to receive the link to the webinar and access to the recording.

[Request for Working Group Proposals - LTER Synthesis Working Groups](#)

Excitement at LTER! The LTER Network Office requests proposals for two synthesis working groups to begin in September 2024. For more info about this opportunity, [check it out here.](#)

Application Deadline: Wednesday, June 26th, 2024 at 5:00 pm PST

[Workshop - Arctic Feedbacks: an Earth's Systems Storyline Unit for MS/HS Classrooms](#)

Location: University of Colorado Boulder, Boulder, CO 80309

Date and time: Wed, Jun 12, 2024 8:30 AM - Thu, Jun 13, 2024 4:30 PM MT

In this FREE 2-day teacher workshop hosted on the University of Colorado Boulder campus, you'll hear from Arctic climate scientists and curriculum developers as they lead you through Arctic Feedbacks, a MS/HS storyline unit tied to NGSS Earth's Systems standards in which students engage with 360° VR tours, and more. For more info about this opportunity, [check out this link.](#)

[Webinar - NCEAS DEIJ Seminar Series!](#)

Date and time: May 16, 2024 at 12 pm PST

Dr. Lourdes Vera of SUNY University at Buffalo will speak on "Seeking Environmental Data Justice Through Feminists Ethics of Care." All attendees will need to [register for the event](#) and future DEIJ webinars.

[Webinar - PDG Seminar Series](#)

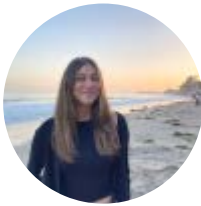
Date and time: May 23, 2024 at 9 am AKT / 11:00am MT / 1:00pm ET

Join Greg Fiske from Woodwell Climate Research Center and Daniel Coe in their upcoming webinar, 'Maps with a Message.' Don't miss out! All attendees will need to join via this [Zoom link](#).

Webinar - NCEAS DEIJ Seminar Series!

Date and time: May 23, 2024 and May 30, 2024 at 12 pm PST

Keara Lightning of University of Alberta will speak on “The Ecology of Possession: De-naturalizing colonial ontologies in environmental management” on May 23rd. Dr. Eric Nost of the Univeristy of Guelph will focus on “Bridging Environmental and Conservation Data Justice” on May 30, 2024. [Register here](#).



Best regards,

Angie Garcia Community Engagement and Outreach Coordinator

✉ agarcia@nceas.ucsb.edu



You received this email because you signed up on our website or have submitted data to the Arctic Data Center.

[Unsubscribe](#)