



September at the Arctic Data Center

Seasons are changing, and fall is finally around the corner as September rolls in. In the Arctic, it almost feels like a festival with colorful tundra vegetation on the rise. This fall, here at the Arctic Data Center we are preparing to teach our new course ["Scalable and Computationally Reproducible Approaches to Arctic Research"](#) as well as getting ready for a season full of meetings and conferences.

Our two big announcements this month are that we are **hiring a data scientist assistant** to join us at the National Center for Ecological Analysis and Synthesis, and [applications for two courses this winter will open this month](#). Please share and distribute widely, and we hope you have a wonderful rest of your summer.

Course Applications Open This Month

These 5 five-day courses are for Arctic researchers and are free to attend.

Fundamentals in Data Management for Qualitative and Quantitative Arctic Research

January 30 - February 3, 2023. Held in Santa Barbara, CA



Application Opens: September 5th

Application Closes: October 10th

This workshop will provide researchers with an overview of reproducible and ethical research practices, steps, and methods for more easily documenting and preserving their data at the Arctic Data Center, and an introduction to programming in R. Special attention will be paid to qualitative data management, including practices working with sensitive data. Example datasets will draw from natural and social sciences, and methods for conducting reproducible research will be discussed in the context of both qualitative and quantitative data. ***This course is designed for researchers to little or no experience using R, and financial support is available for travel expenses.***



Reproducible Practices for Arctic Research Using R

February 27 - March 2, 2023. Taught virtually

Application Opens: September 26th

Application Closes: October 31st

This 5-day remote workshop will provide researchers with an overview of the best data management practices, data science tools for cleaning and analyzing data, and concrete steps and methods for more easily documenting and preserving their data at the Arctic Data Center. Example tools include R, Rmarkdown, and git/GitHub. This course provides background in both the theory and practice of reproducible research, spanning all portions of the research lifecycle, from ethical data collection following the [CARE](#) principles to engaging with local stakeholders, to data publishing.

Announcing Permafrost Discovery Gateway Fall Series

Join us at four upcoming seminars this fall

The Permafrost Discovery Gateway hosts a monthly webinar series on a Thursday at 09:00 Alaska time. The webinar aims to connect the international science community interested in big data remote sensing of permafrost landscapes and provide the Permafrost Discovery Gateway development team with end-user stories (by the presenter and webinar participants), such as exploring tools the community needs to create and explore big data.



More info and the zoom link here!

NOW HIRING Data Scientist Assistant



Apply by September 9th

The Arctic Data Center is seeking a data scientist assistant! The NCEAS Assistant Data Scientist develops software to manage, process, analyze, and visualize data for synthesis projects at the National Center for Ecological Analysis and Synthesis (NCEAS) and its affiliated projects,

including the Arctic Data Center, the Permafrost Discovery Gateway, and others. The data scientist collates data and creates generalized processing workflows in code to clean and integrate data, process it into derived products, and feed it into analysis, modeling, and visualization applications. If you're interested in data processing coding, software development, and a collaborative environment, apply today.

Learn more and apply now!

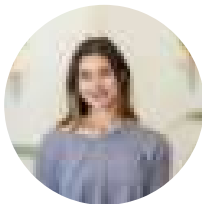
Thank you for much taking the time to read our updates. If you were forwarded this newsletter and would like to subscribe to receive future updates, please email our team.

Best regards, the Arctic Data Center Communication Team.



Natasha Haycock-Chavez Community Engagement and Outreach Coordinator

✉ haycock-chavez@nceas.ucsb.edu ☎ (805) 893-2500



Ranna Zahabi Science Communication Intern

✉ zahabi@nceas.ucsb.edu ☎ (805) 893-2500



 SHARE

 TWEET

 FORWARD