



The Arctic Data Center just received one of our biggest news yet, NSF has reaffirmed their investment in preserving Arctic research products at the Arctic Data Center! We're excited to share what's ahead in our most recent [announcement](#). We also published our 2026 Community Survey results and your feedback is shaping our next steps. Read on for more details and opportunities available to the Arctic research community!

Newsletter At a Glance

- News Announcement: NSF Awards the Arctic Data Center 5 More Years of Funding
- What We Learned from the Arctic Data Center's 2026 Community Survey
- Latest Datasets
- NNA Research Experience for Undergraduate Students
- Polar STEAM Seeking NSF-Funded Polar Researchers for Collaboration
- New Paper Releases



News Announcement

NSF Reaffirms Commitment to Long-Term Preservation of Arctic Research Data

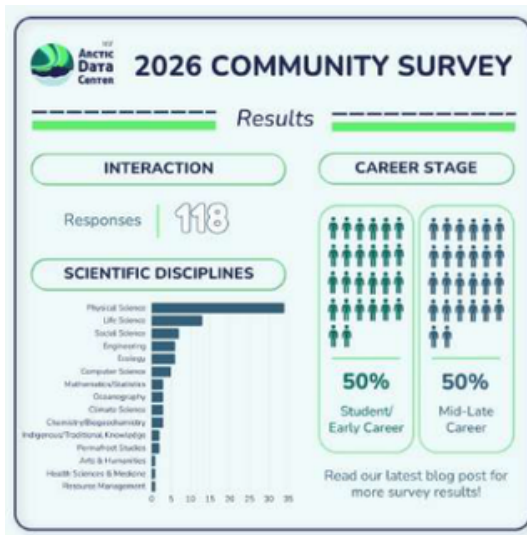
This month, we are celebrating the recent renewal of funding from NSF for 5 additional years of Arctic Data Center support. Alongside maintaining core operations, the Center will expand support for large datasets and AI-ready data, collaborate with the Arctic research community to develop data stories and portals for broader sharing and impact, and continue advancing open Arctic science infrastructure. Read more about the next phase [here](#).

[Read Announcement](#)

New Blog

What We Learned from the Arctic Data Center's 2026 Community Survey

To better understand the emerging needs of the Arctic research community, the Arctic Data Center launched its 2026 Community Survey, inviting anyone who works with Arctic data to share their experiences, challenges, and priorities. This [blog post](#) features feedback from the survey and our plan for improvements.



[Read our Recap](#)

Latest Datasets

[Explore the full catalog](#)

Explore some of the latest datasets uploaded to the Arctic Data Center, ranging from geoscience to atmospheric science.



Geochemistry

Dunleavy et al., 2026

This dataset has enzyme activity, soil chemistry, and leaf chemistry collected from Siberian alder roots across 11 sites in Arctic and boreal Alaska, which helps understand how this expanding shrub affects nutrient cycling in northern ecosystems.

[View Dataset](#)



Oceanography

Ashjian et al., 2026

This dataset contains ocean current and particle data collected near Point Barrow, Alaska, as part of a larger effort to understand how shifting environmental conditions are affecting bowhead whale migration patterns along the Beaufort Shelf.

[View Dataset](#)



Cryology

Morris, 2026

This dataset features ice core records from deep within a Greenland ice stream with a detailed chemical record of past climate conditions that help better understand how ice sheets behave and how they may contribute to future sea-level rise.

[View Dataset](#)

Partner News & Opportunities



Applications are due by Friday, June 26, 2026 at 11:59 PM ET

NNA Research Experience for Undergraduate Students

The NNA-CO is seeking undergraduate students from **Alaska communities** to participate in a short intensive research experience program focused on exploring Western and Indigenous science methods of studying how a changing climate impacts Arctic communities. During the program, students will learn about research in the

Arctic, will be paired with research mentors to complete a small community-informed research project, and will attend the NNA Annual Community Meeting in Fairbanks, Alaska. Students will have the opportunity to present their work and reflect on the program at the conclusion of the meeting. [Learn more here.](#)

Learn more

NCEAS 2026 Seminar Series

Environmental Data Science and Its Impacts on Communities and Ecosystems

Don't miss the final webinar of NCEAS's annual Seminar Series on June 11 at 12pm PDT! Patricia Balvanera of the National Autonomous University of Mexico will be presenting on "*Plural Syntheses of Knowledge to Support More Just and Sustainable Futures.*" Visit their [Annual Seminar Series](#) page to learn more and [register here!](#)

Register for Seminar Series

A poster for the NCEAS 2026 Seminar Series. The top section is green with the text 'NCEAS 2026 SEMINAR SERIES'. Below this is a red banner with the title 'ENVIRONMENTAL DATA SCIENCE AND ITS IMPACTS ON COMMUNITIES AND ECOSYSTEMS'. A circular portrait of Patricia Balvanera is on the left. To the right, her name 'Patricia Balvanera' is written in bold, followed by 'NATIONAL AUTONOMOUS UNIVERSITY OF MEXICO' and the title of her presentation: 'PLURAL SYNTHESSES OF KNOWLEDGE TO SUPPORT MORE JUST AND SUSTAINABLE FUTURES'. The date and time are 'Thursday, June 11, 2026 at 12pm PDT'. An abstract follows, discussing science-policy platforms and the Intergovernmental Platform on Biodiversity and Ecosystem Services (IPBES). At the bottom, it says 'Zoom Registration: nceas.ucsb.edu/seminar-series'.



Do you conduct NSF-funded research using polar data? Polar STEAM is recruiting researchers interested in collaborating with educators either virtually or in the field (2027 Arctic field season). Our **virtual collaborations** are a great fit for data-focused projects, allowing you to engage with educators using existing datasets, models, or samples from any field season. This no-cost opportunity supports broader impacts by embedding professional educators into your research team to co-create educational products that connect your science with wider audiences.

Join a national cohort of polar researchers, strengthen your science communication, and share your work in new and meaningful ways. Learn more at polarsteam.info or get started by emailing polarsteam@oregonstate.edu to schedule a brief introductory conversation.

All career levels, from graduate students to seasoned principal investigators, are welcome to participate!

Learn more

New Paper Releases

Modified Von Mises Stress a Robust Predictor of the Spatial Distribution of Ice Slab Crevasse Fields in Greenland

This paper by Culberg et al. discovered that more than half of the Greenland Ice Sheet's dense ice layers are cracked, which means meltwater can drain through the ice much more easily than scientists previously thought. This changes how we understand where all that meltwater goes and how much of it ultimately reaches the ocean. Read more in the [full article](#).

Read Article

A comprehensive database of thawing permafrost locations across Alaska: version 2.0.0

This study by Webb et al. put together records of thawing permafrost from across Alaska into a free and open database to make it easier for communities, land managers, and researchers to see where the ground is thawing and how quickly it's changing. As Arctic warming causes

permafrost to thaw faster, having this kind of statewide snapshot is key for planning and decision-making. Read more in the [full article](#).

Read Article

Estimating the thermodynamic contribution of post-industrial warming to recent Greenland ice sheet surface mass loss

In this study by Preece et al., they found that the long-term warming of the Arctic is the main driver behind the Greenland Ice Sheet melting as rapidly. Their team simulated what melting would have looked like under today's wind patterns, but a cooler pre-industrial climate found that warming accounted for more than 62% of the ice loss observed between 2000 and 2019. [See data supporting](#) this research archived at the Arctic Data Center. Read more in the [full article](#).

Read Article

Other Opportunities

Job Opportunities

- Assistant Professor in Earth Sciences specialising in Dynamics of Earth Systems (<https://www.uu.se/en/about-uu/...>)
- Data Management Specialist at the Smithsonian's National Museum of Natural History (<https://trustcareers.si.edu/po...>)
- Strategic Consultant, Open Science, Data Resilience with AGU (<https://www.paycomonline.net/v...>)

Postdoc Opportunities

- Research Scientist I at the Institute of Arctic and Alpine Research (INSTAAR) at the University of Colorado-Boulder (<https://jobs.colorado.edu/jobs...>)
- Postdoctoral researcher in ecosystem modeling at Woodwell Climate Research Center (<https://workforcenow.adp.com/m...>)
- Postdoc in “The role of freshwater in the Southern Ocean – Antarctic climate system” at the Alfred Wegener Institute (<https://jobs.awi.de/Vacancies/...>)

Conferences and Workshops

- Call for Papers: AI in Glaciology with the International Glaciological Society (IGS) (<https://www.igsoc.org/call-for...>)

Glacial Sedimentation School 2026 at Oregon State University, July 13-17, 2026

(<https://www.cognitoforms.com/O...>)

2026 NNA Annual Community Meeting in Fairbanks, Alaska, September 15-17, 2026

(<https://nna-co.org/outreach/wo...>)

[Browse Past Newsletters Here](#)

You received this email because you signed up on our website or
have submitted data to the Arctic Data Center.

[Unsubscribe](#)