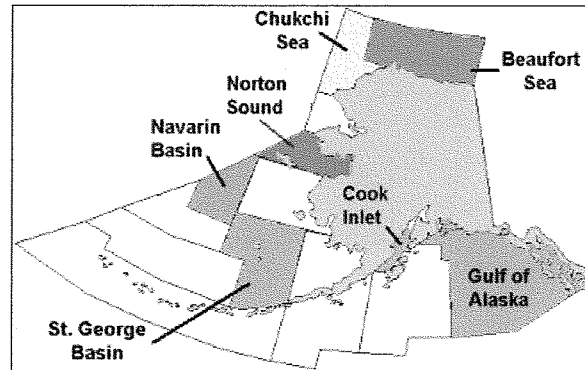


**Exploratory Drilling by Sale Area**

- Upcoming Events
- Region's Update
- Current Activities
- Reading Room
- Environmental Studies
- Leasing Activities
- Resource Evaluation
- Offshore Information
- Alaska Native Links
- Shipwrecks
- Kids Corner
- Other Regions
- Forms
- Public Comments
- FOIA
- Privacy Act/Disclaimer

Area	Wells Drilled
Beaufort Sea	31
Chukchi Sea	4
Norton Sound	6
Navarin Basin	8
St. George Basin	10
Cook Inlet	13
Gulf of Alaska	12
<b>Total</b>	<b>84</b>



◀ [Field Operations and Drilling Information](#)



**Questions?**  
**Need More Information?**  
**Please Write:**  
 Alaska Region Public Information

This page last updated:  
 10/24/2008

Alaska OCS Region - Minerals Management Service  
**Chukchi Sea Exploration Wells**

Lease OCS Y-	Well No.	API Number	Operator	Prospect	Sale No.	Latitude (NAD 27)	Longitude (NAD 27)	Spud	End	Water Depth	Drilling Unit
0996	1	55-322-00001	Chevron USA Inc.	Diamond	97	71 19' 48.34"N	161 40' 48.01"W	9/7/91	10/5/91	152 ft	Canmar Explorer III
1275	1	55-382-00002	Shell Western E&P Inc.	Popcorn	109	71 51' 16.385"N	165 48' 24.893"W	10/14/89	9/23/90	143 ft	Explorer III Drillship
1320	1	55-382-00003	Shell Western E&P Inc.	Crackerjack	109	71 25' 7.665"N	165 32' 29.253"W	9/23/90	8/31/91	137 ft	Explorer III Drillship
1413	1	55-352-00001	Shell Western E&P Inc.	Burger	109	71 15' 04.995"N	163 11' 40.499"W	9/22/89	8/22/90	149 ft	Explorer III Drillship
1482	1	55-381-00001	Shell Western E&P Inc.	Klondike	109	70 42' 39.171"N	165 14' 59.107"W	7/9/89	9/15/89	141 ft	Explorer III Drillship

 [Back to Field Operations and Drilling Information](#)

Last Updated 12/14/2005

## Alaska OCS Region - Minerals Management Service

## Beaufort Sea Exploration Wells

Lease OCS Y-	Well No.	API Number	Operator	Prospect	Sale Number	Latitude (NAD 27)	Longitude (NAD 27)	Spud	End	Water Depth	Drilling Unit
0180	1	50-029-21236	Shell Oil Company	Seal	BF	70 29' 31.77"N	148 41' 34.68"W	2/22/85	7/21/85	39 ft	P.N.J.V. Rig #1 Seal Gravel Island
0181	1	50-029-21074	Shell Western E&P Inc.	Seal	BF	70 29' 31.44"N	148 41' 35.80"W	2/4/84	6/30/84	39 ft	P.N.J.V. Rig #1 Seal Gravel Island
0191	1	55-201-00001	Exxon Corporation	Beechey Point	BF	70 23' 11.79"N	147 53' 27.98"W	11/1/81	3/31/82	18 ft	Nabors 27-E, BF-37 Gravel Island
0191	2	55-201-00002	Exxon Corporation	Beechey Point	BF	70 23' 11.79"N	147 53' 28.71"W	12/27/81	3/15/82	18 ft	Nabors 27-E, BF-37 Gravel Island
0195	1	55-201-00003	Shell Oil Company	Tern	BF	70 16' 46.02"N	147 29' 45.61"W	5/28/82	9/18/82	21 ft	Brinkerhoff #84, Tern Gravel Island
0196	1	55-201-00004	Shell Oil Company	Tern	BF	70 16' 46.33"N	147 29' 44.90"W	10/16/82	3/3/83	21 ft	Brinkerhoff #84, Tern Gravel Island
0197	1	55-201-00004-01	Shell Western E&P Inc.	Tern	BF	70 16' 46.33"N	147 29' 44.89"W	2/10/87	5/10/87	22 ft	Pool Arctic #5, Tern Gravel Island
0267	1	55-232-00003	Arco Alaska, Inc.	Fireweed	71	71 05' 16.723"N	152 36' 11.479"W	10/19/90	12/25/90	50 ft	SSDC/MAT
0280	1	55-232-00001	Exxon Corporation	Antares	71	71 02' 10.05"N	152 43' 25.28"W	11/1/84	1/18/85	49 ft	Beaufort Sea # 1, CIDS
0280	2	55-232-00002	Exxon Company USA	Antares	71	71 02' 10.00"N	152 43' 25.46"W	1/19/85	4/12/85	49 ft	Beaufort Sea # 1, CIDS
0302	1	55-231-00004	Amoco	Mars	71	70 50' 34.83"N	152 04' 17.98"W	3/12/86	4/27/86	25 ft	Spray Ice Island
0334	1	55-231-00001	SOHIO Alaska Petroleum	Mukluk	71	70 41' 00.04"N	150 55' 11.89"W	11/1/83	1/24/84	48 ft	United Rig # 2, Mukluk Gravel Island
0338	1	55-231-00005	Tenneco	Phoenix	71	70 43' 01.99"N	150 25' 40.15"W	9/23/86	12/19/86	60 ft	SSDC/MAT
0370	1	55-201-00007	Shell Oil Company	Harvard	71	70 35' 05.4"N	149 05' 48.8"W	9/2/85	1/25/86	49 ft	PAA Rig #5, Sandpiper Gravel Island

0371	1	55-201-00008	Amoco	Sandpiper (Harvard)	71	70 35' 05.45"N	149 05' 48.40"W	2/8/86	7/12/86	49 ft	PAA Rig #5, Sandpiper Gravel Island
0742	1	55-262-00001	Arco Alaska, Inc.	Cabot	87	71 19' 25.44"N	155 12' 56.48"W	11/1/91	2/26/92	55 ft	SSDC
0804	1	55-231-00003	Exxon Company USA	Orion	87	70 57' 22.3"N	152 03' 46.6"W	11/10/85	12/15/85	50 ft	GLOMAR BEAUFORT SEA #1 CIDS
0849	1	55-171-00001	Union Oil Company	Hammerhead	87	70 21' 52.6"N	146 01' 27.9"W	8/10/85	9/24/85	103 ft	Canmar Explorer II
0849	2	55-171-00006	Union Oil Company	Hammerhead	87	70 22' 41.79"N	146 01' 52.41"W	9/27/86	10/11/86	107 ft	Explorer II Drillship
0865	1	55-171-00009	Arco Alaska, Inc.	Kuvlum	87	70 18' 36"N	145 32' 18.2"W	7/28/93	8/30/93	96 ft	Beaudril Kulluk
0866	1	55-171-00008	Arco Alaska, Inc.	Kuvlum	87	70 18' 57.38"N	145 25' 10.97"W	8/22/92	10/14/92	110 ft	Beaudril Kulluk
0866	2	55-171-00010	Arco Alaska, Inc.	Kuvlum	87	70 19' 36.78"N	145 24' 14.67"W	9/7/93	10/5/93	107 ft	Canmar Kulluk
0871	1	55-171-00002	Shell Western E&P Inc.	Corona	87	70 18' 52.6"N	144 45' 32.9"W	7/28/86	9/18/86	116 ft	Canmar Explorer II
0917	1	55-141-00005	Amoco Production Company	Belcher	87	70 16' 31.16"N	141 30' 46.49"W	9/5/88	8/29/89	167 ft	Beaudril Kulluk
0943	1	55-141-00004	Tenneco	Aurora	87	70 06' 33.02"N	142 47' 05.88"W	11/2/87	8/30/88	66 ft	SSDC/MAT
1092	1	55-171-00007	Amoco Production	Galahad	97	70 33' 38.68"N	144 57' 35.75"W	9/14/91	10/13/91	166 ft	Canmar Explorer II
1578	1	55-201-00010	Encana Oil & Gas (USA) Inc.	McCovey	124	70 31' 37.9"N	148 10' 48.2" W	12/6/2002	1/27/2003	35 ft	SDC/MATT
1597	1	55-171-00011	Arco Alaska, Inc.	Wild Weasel	124	70 13' 22.41"N	145 29' 57.11"W	10/13/93	11/9/93	87 ft	Canmar Kulluk
1650	1	55-201-00009	British Petroleum Exploration (Alaska)	Liberty	144	70 16' 45.113"N	147 29' 47.145"W	2/7/97	3/30/97	21 ft	PAA #4 Tern Gravel/Ice Island
1663	1	55-171-00012	Arco Alaska, Inc.	Warthog	144	70 02' 34" N (NAD 83)	144 55' 02 W (NAD 83)	11/1/97	12/5/97	35 ft	Glomar Beaufort Sea #1

[◀ Back to Field Operations and Drilling Information](#)

Last Updated 10/06/2006