

CSRS-PPP 3.50.3 (2022-03-04)



reach-base_raw_202210022024.220
GCP2middleSB

Data Start		Data End		Duration of Observations	
2022-10-02 20:24:34.00		2022-10-02 21:33:33.01		1:08:59.010	
Processing Time				Product Type	
16:11:45 UTC 2022/10/13				NRCan Rapid	
Observations		Frequency		Mode	
Phase and Code		Double		Static	
Elevation Cut-Off	Rejected Epochs	Fixed Ambiguities		Estimation Steps	
7.5 degrees	0.00 %	74.84 %		1.00 sec	
Antenna Model		APC to ARP		ARP to Marker	
EML_REACH_RS2 NONE		L1 = 0.135 m L2 = 0.137 m		H:0.134m / E:0.000m / N:0.000m	

(APC = antenna phase center; ARP = antenna reference point)

Estimated Position for reach-base_raw_202210022024.220

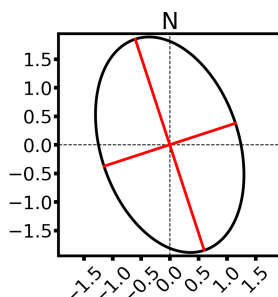
	Latitude (+n)	Longitude (+e)	Ell. Height
ITRF14 (2022.8)	58° 24' 54.09958"	-134° 2' 41.08759"	93.646 m
Sigmas(95%)	0.015 m	0.010 m	0.061 m
A priori*	58° 24' 54.13661"	-134° 2' 41.05239"	94.584 m
Estimated – A priori	-1.146 m	-0.571 m	-0.938 m

Orthometric Height
CGVD2013
(CGG2013a)
(2022.8)

91.024 m

(click for height reference information)

95% Error Ellipse (cm)
semi-major: 1.9 cm
semi-minor: 1.2 cm
semi-major azimuth: -18° 55' 24.91"



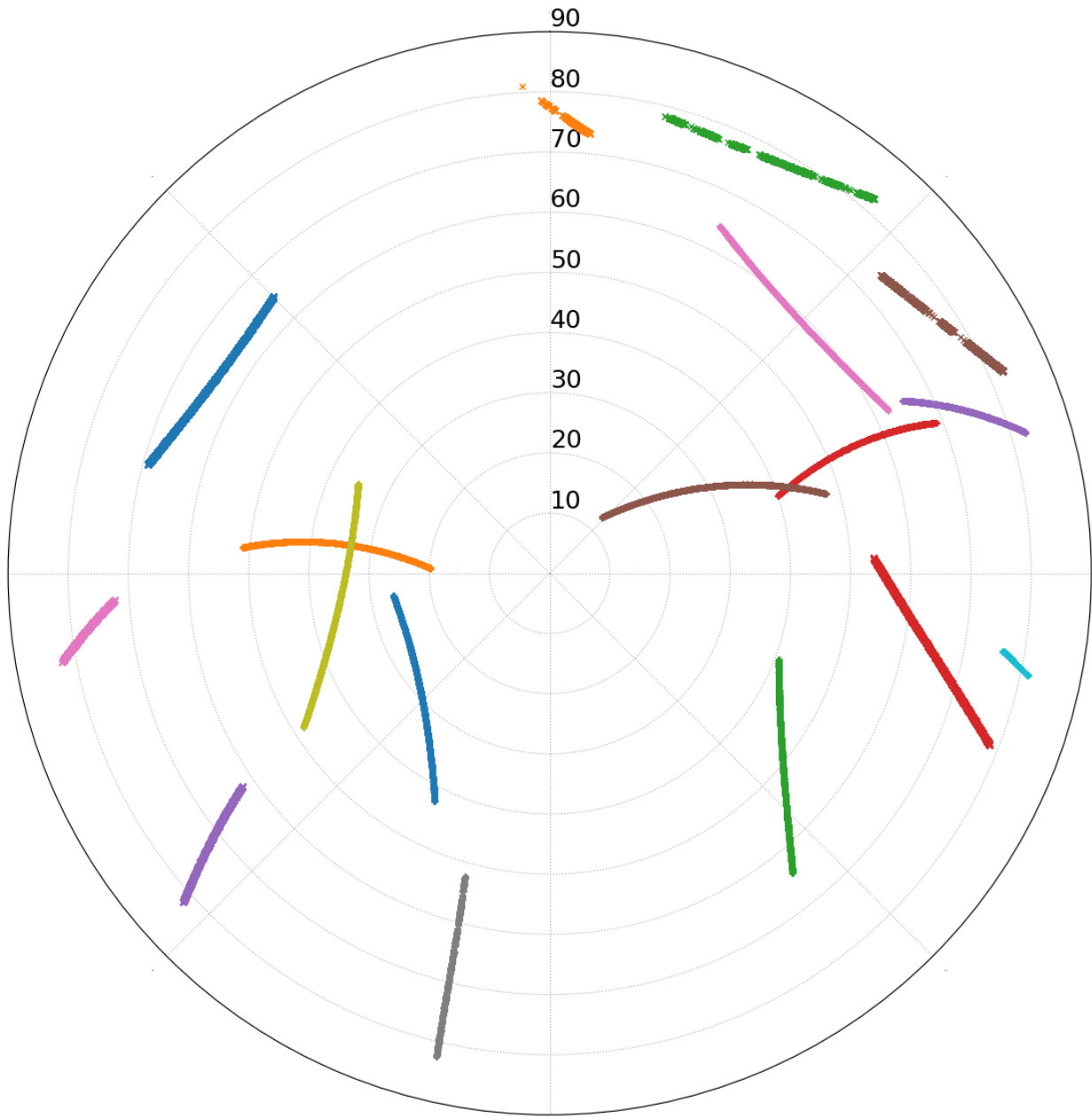
UTM (North)
Zone 8

6475314.312 m (N)
555808.308 m (E)

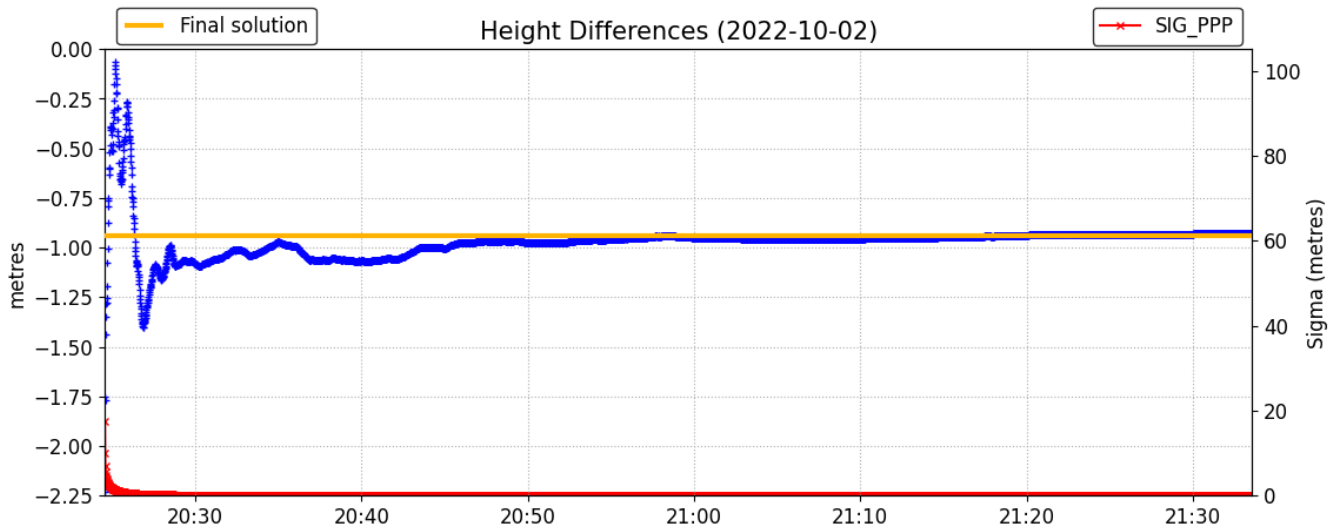
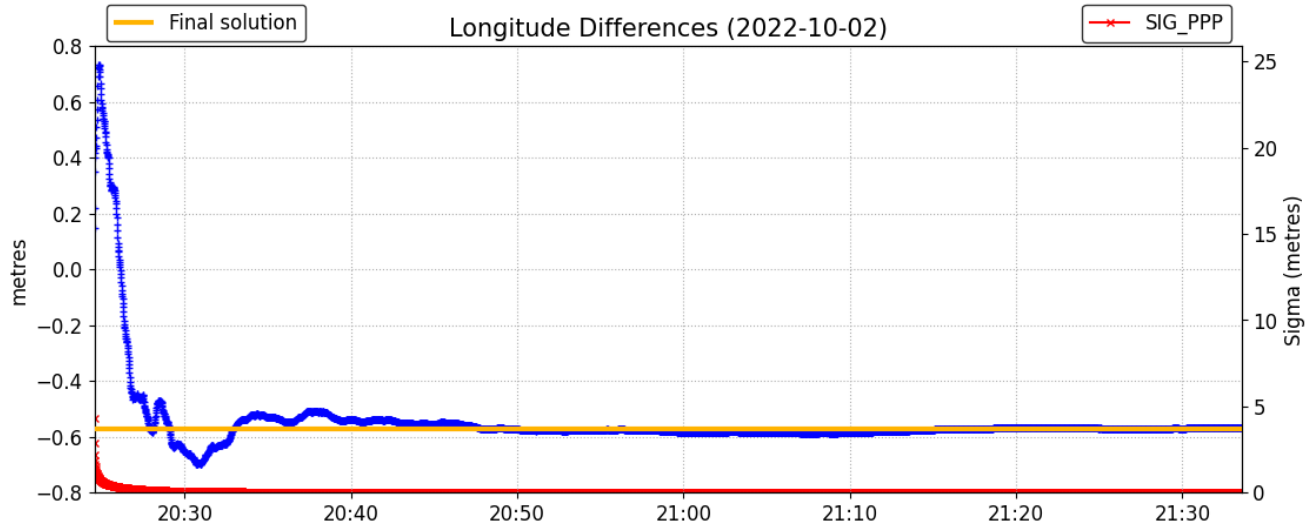
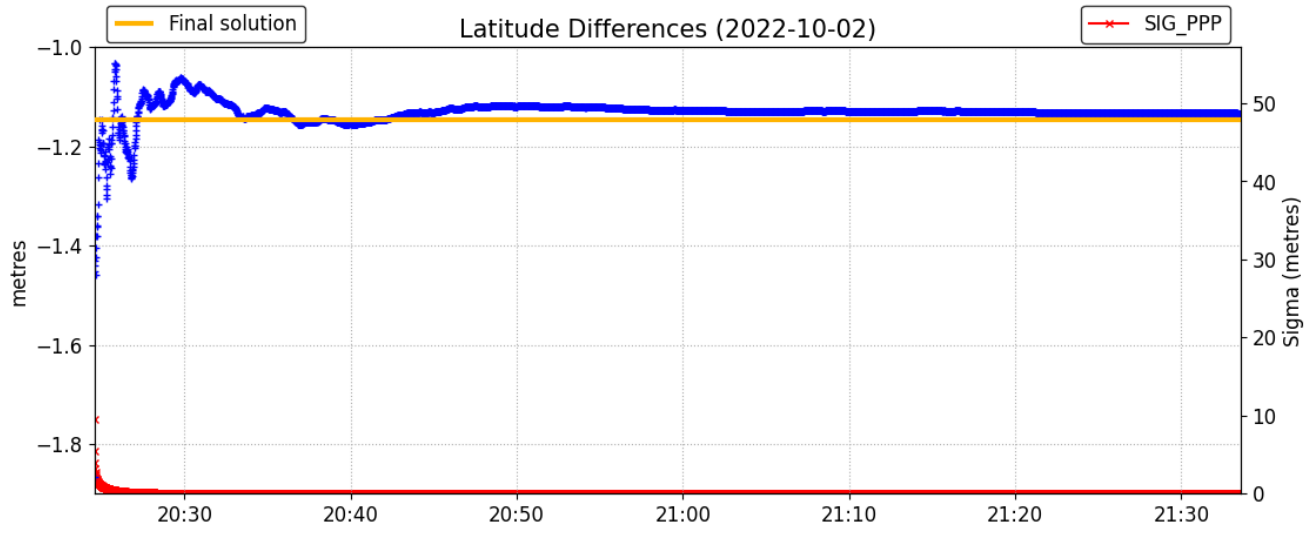
Scale Factors
0.99963818 (point)
0.99962353 (combined)

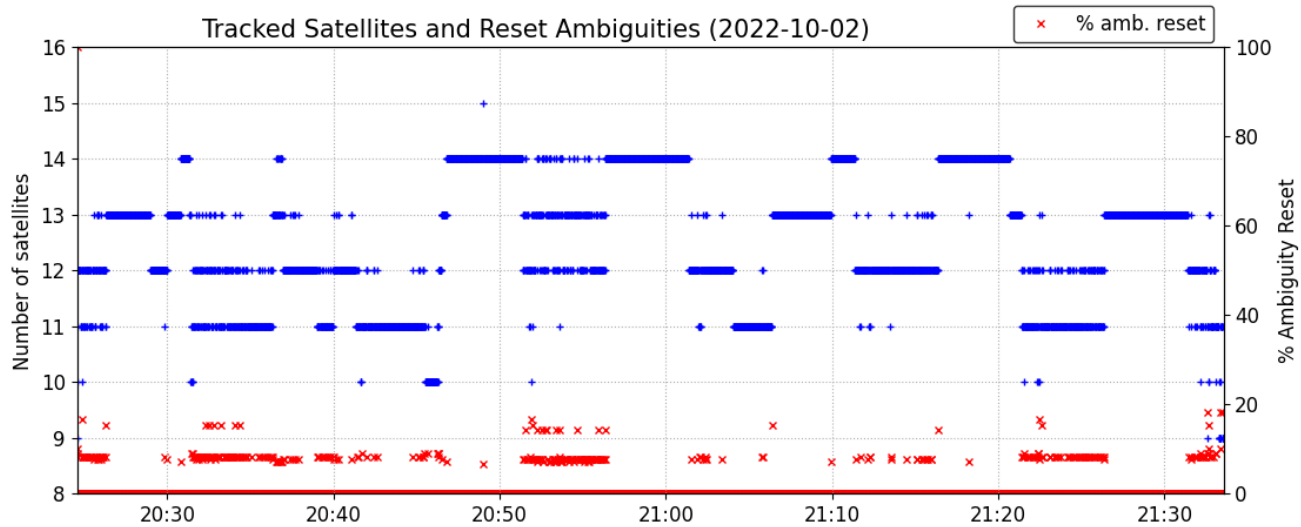
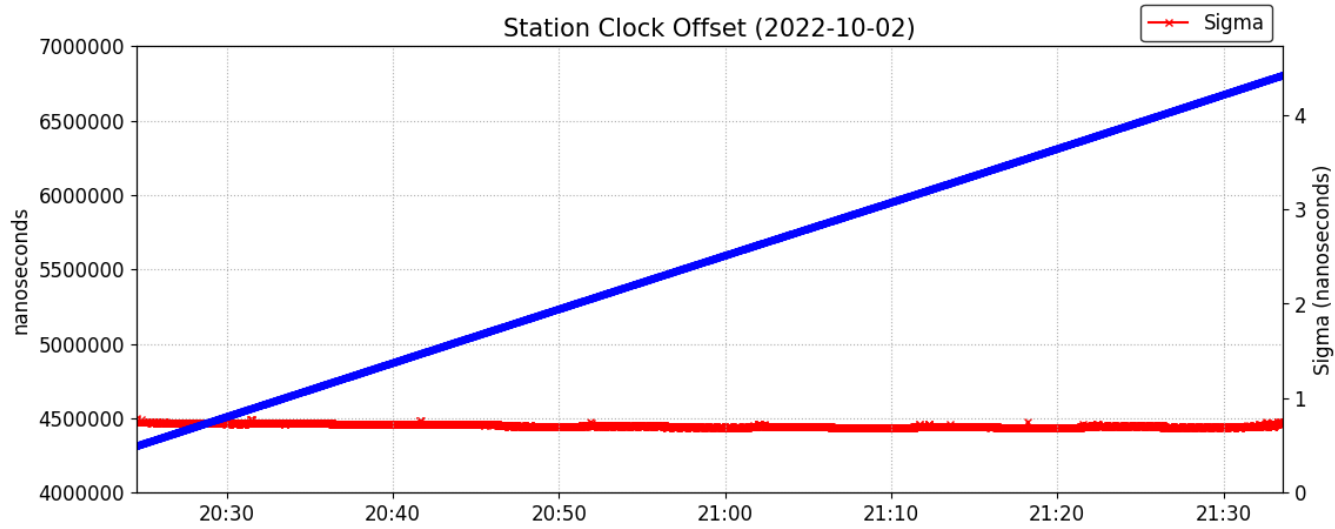
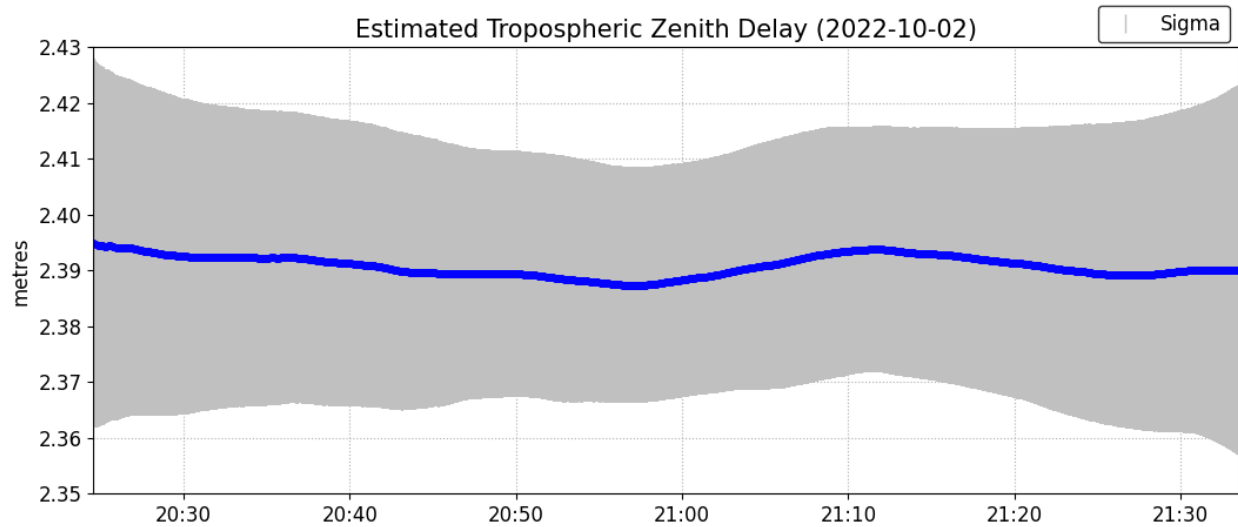
*(Coordinates from RINEX header used as a priori position)

Satellite Sky Distribution

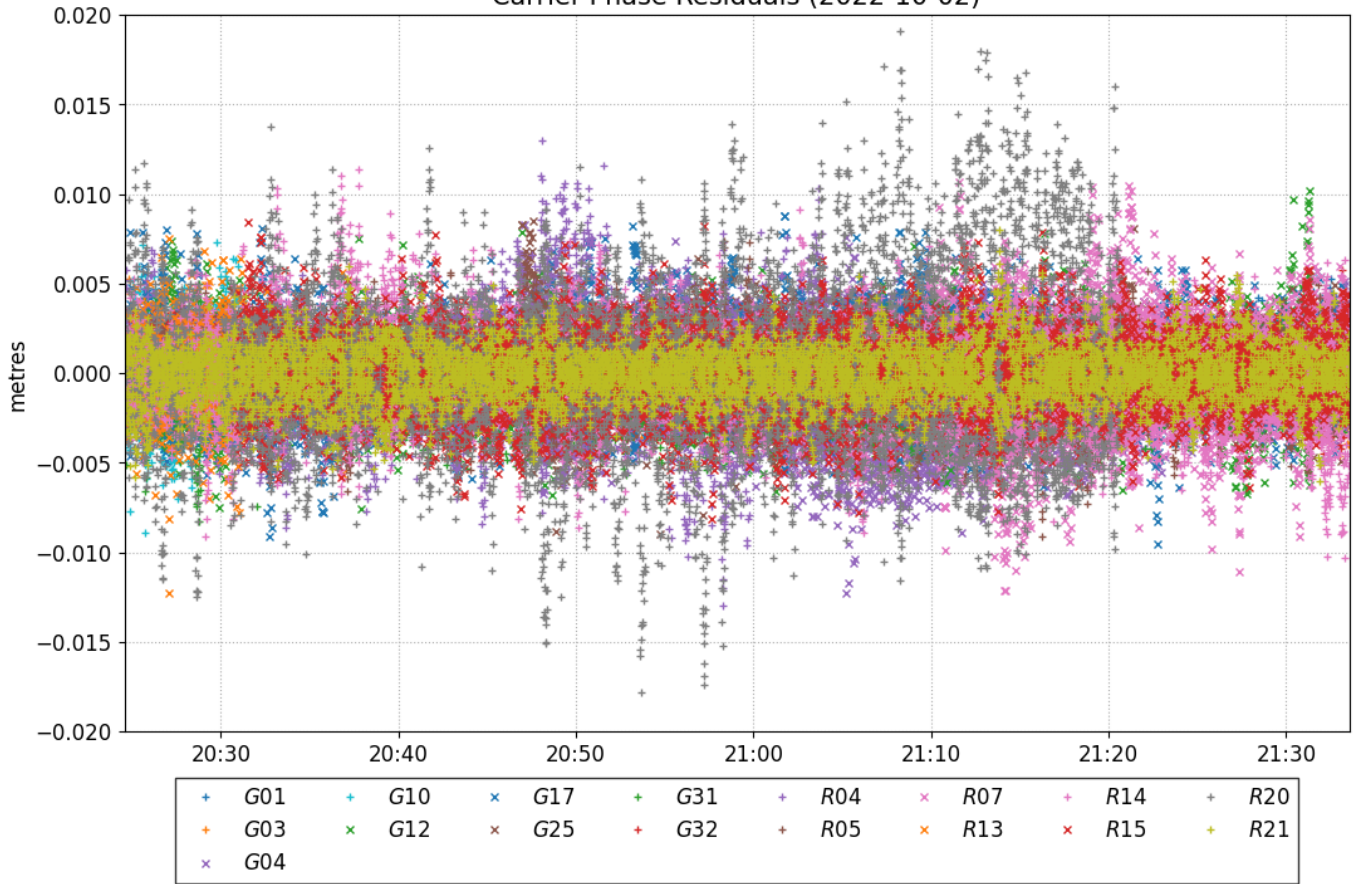


+	G01	+	G10	x	G25	+	R04	x	R13	+	R20
+	G03	x	G12	+	G31	+	R05	+	R14	+	R21
x	G04	x	G17	+	G32	x	R07	x	R15		

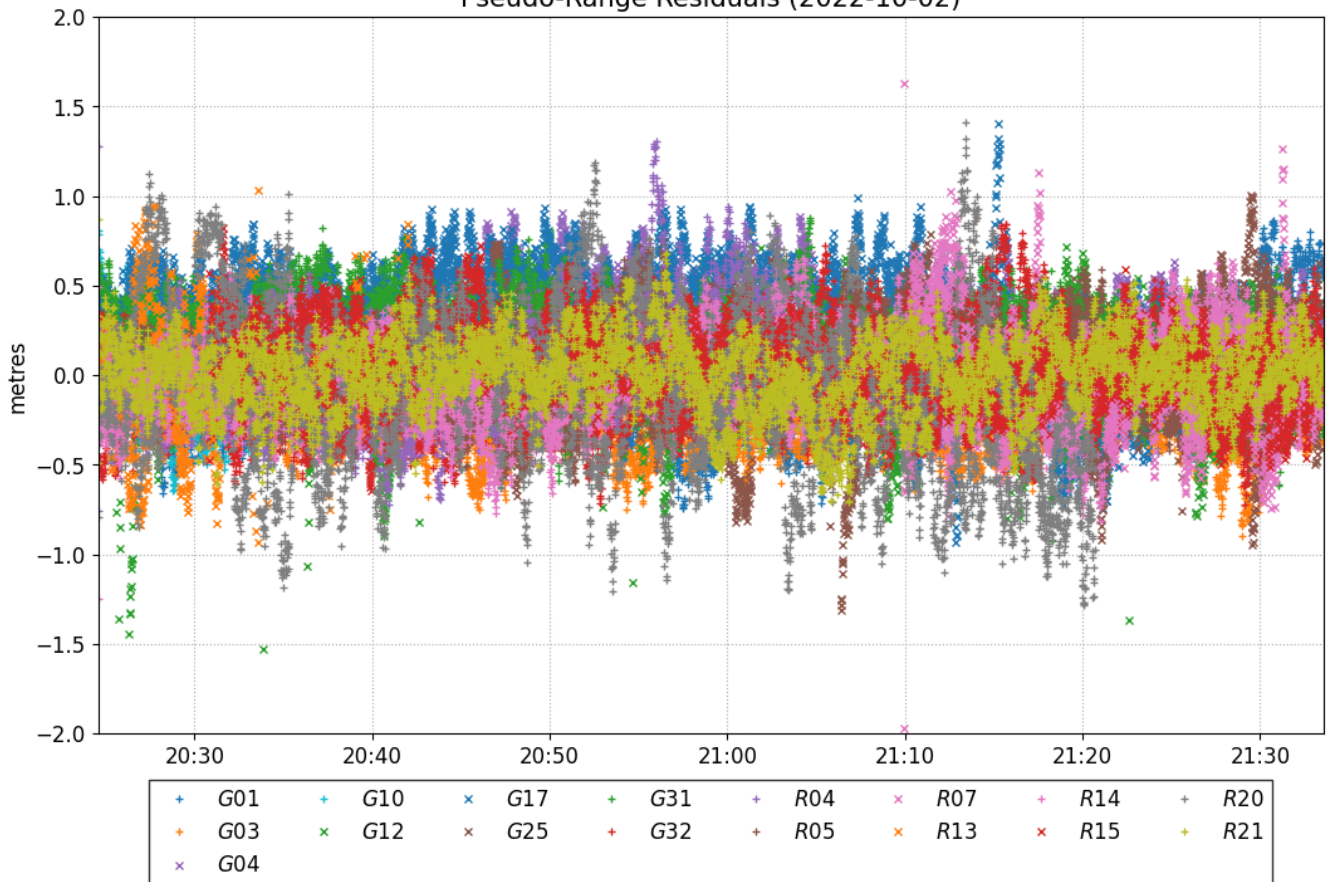




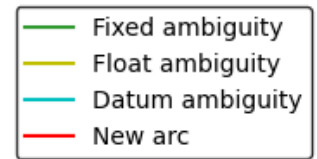
Carrier-Phase Residuals (2022-10-02)



Pseudo-Range Residuals (2022-10-02)



Phase Ambiguity Status (2022-10-02)



~~~ Disclaimer ~~~

Natural Resources Canada does not assume any liability deemed to have been caused directly or indirectly by any content of its CSRS-PPP online positioning service.

If you have any questions, please feel free to contact:

**Geodetic Integrated Services
Canadian Geodetic Survey
Surveyor General Branch
Natural Resources Canada
Government of Canada
588 Booth Street, Room 334
Ottawa, Ontario K1A 0Y7
Phone: 343-292-6617**

Email: geodeticinformation-informationgeodesique@nrcan-rncan.gc.ca



**Natural Resources
Canada**

**Ressources naturelles
Canada**

Canada