

# CSRS-PPP 3.50.3 (2022-03-04)



reach-base\_raw\_202206292011.220  
GCP2lowerSB

<b>Data Start</b>	<b>Data End</b>	<b>Duration of Observations</b>	
2022-06-29 20:12:00.00	2022-06-29 21:30:00.00	1:18:00	
<b>Processing Time</b>		<b>Product Type</b>	
18:57:34 UTC 2022/09/30		NRCan/IGS Final	
<b>Observations</b>	<b>Frequency</b>	<b>Mode</b>	
Phase and Code	Double	Static	
<b>Elevation Cut-Off</b>	<b>Rejected Epochs</b>	<b>Fixed Ambiguities</b>	<b>Estimation Steps</b>
7.5 degrees	0.00 %	47.59 %	30.00 sec
<b>Antenna Model</b>	<b>APC to ARP</b>	<b>ARP to Marker</b>	
EML_REACH_RS2 NONE	L1 = 0.135 m L2 = 0.137 m	H:0.134m / E:0.000m / N:0.000m	

(APC = antenna phase center; ARP = antenna reference point)

## Estimated Position for reach-base\_raw\_202206292011.220

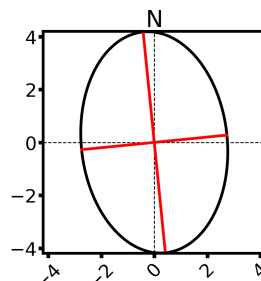
	Latitude (+n)	Longitude (+e)	Ell. Height
<b>ITRF14 (2022.5)</b>	58° 24' 35.49618"	-134° 2' 9.16857"	10.139 m
<b>Sigmas(95%)</b>	0.034 m	0.022 m	0.101 m
<b>A priori*</b>	58° 24' 35.53498"	-134° 2' 9.14883"	13.584 m
<b>Estimated – A priori</b>	-1.200 m	-0.321 m	-3.445 m

**Orthometric Height**  
CGVD2013  
(CGG2013a)  
(2022.5)

7.549 m

(click for height reference information)

**95% Error Ellipse (cm)**  
semi-major: 4.2 cm  
semi-minor: 2.8 cm  
semi-major azimuth: -5° 16' 8.61"



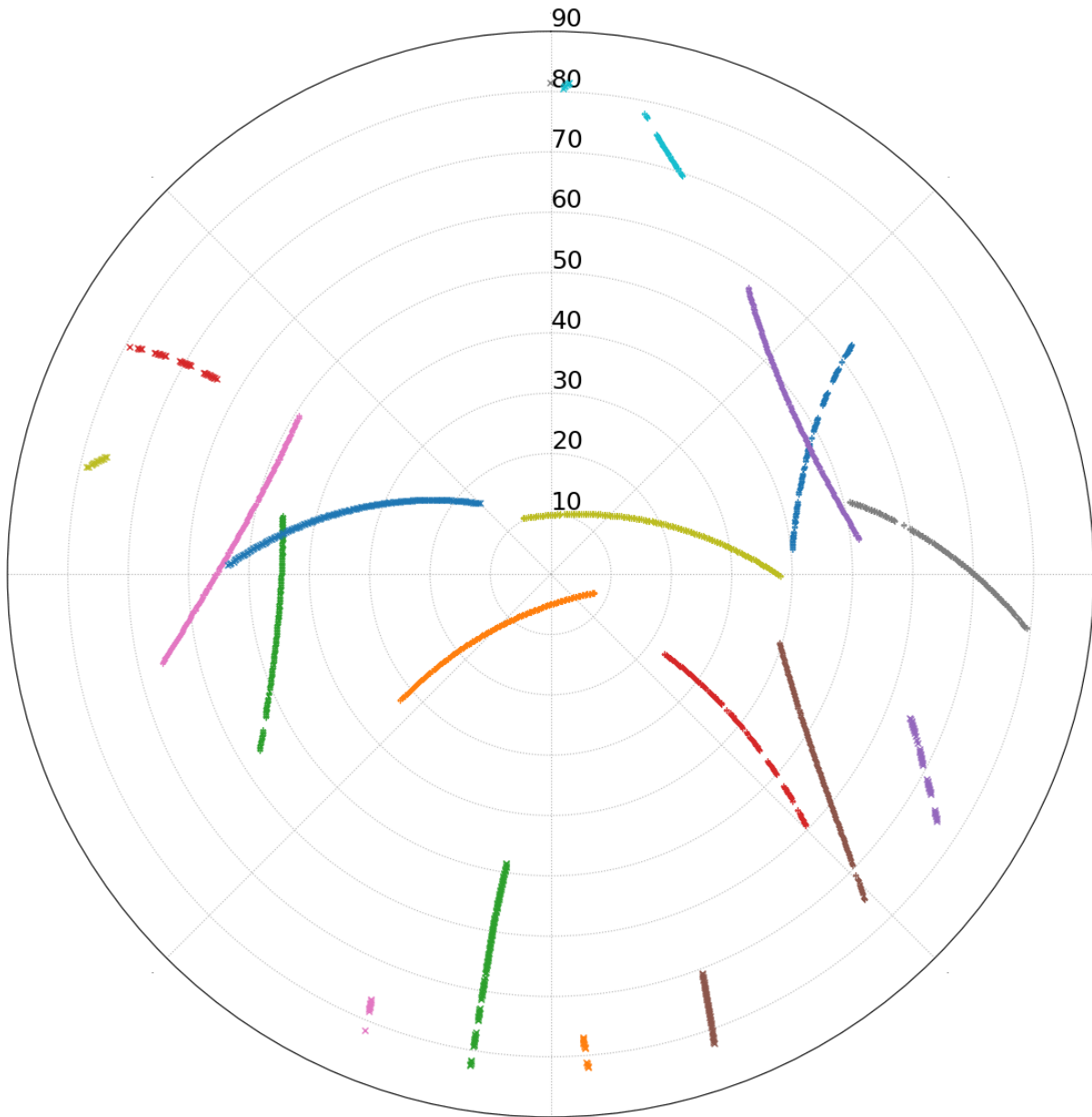
**UTM (North)**  
**Zone 8**

6474746.377 m (N)  
556334.530 m (E)

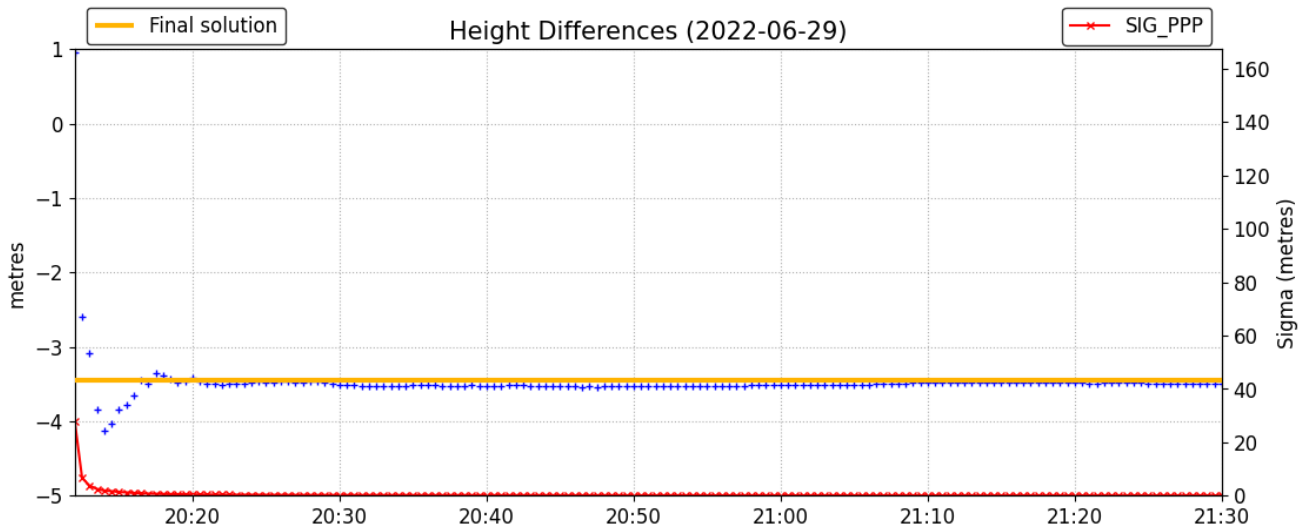
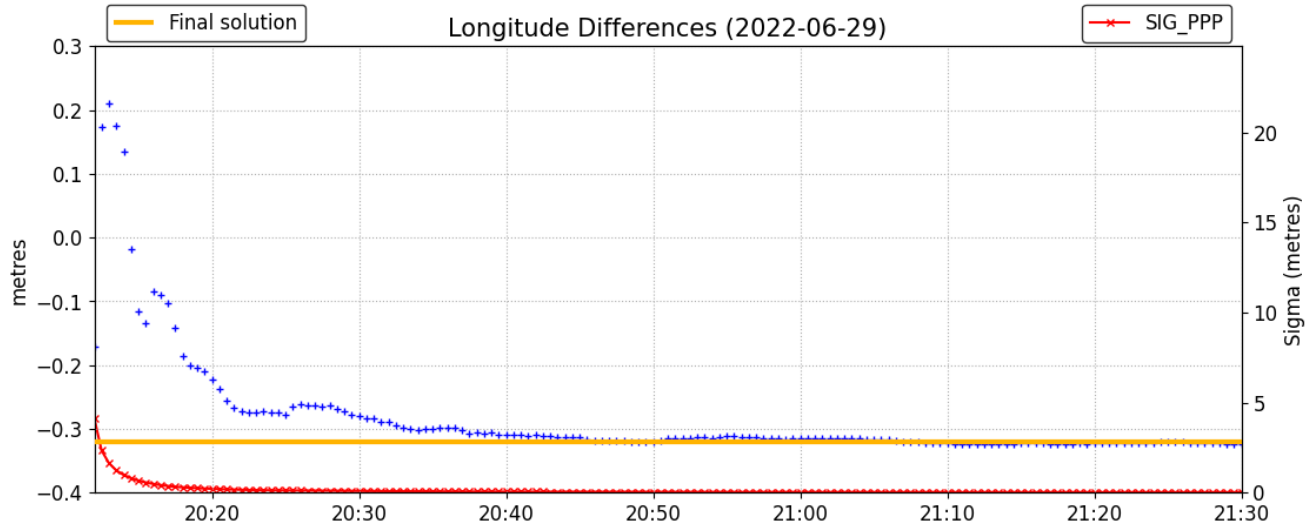
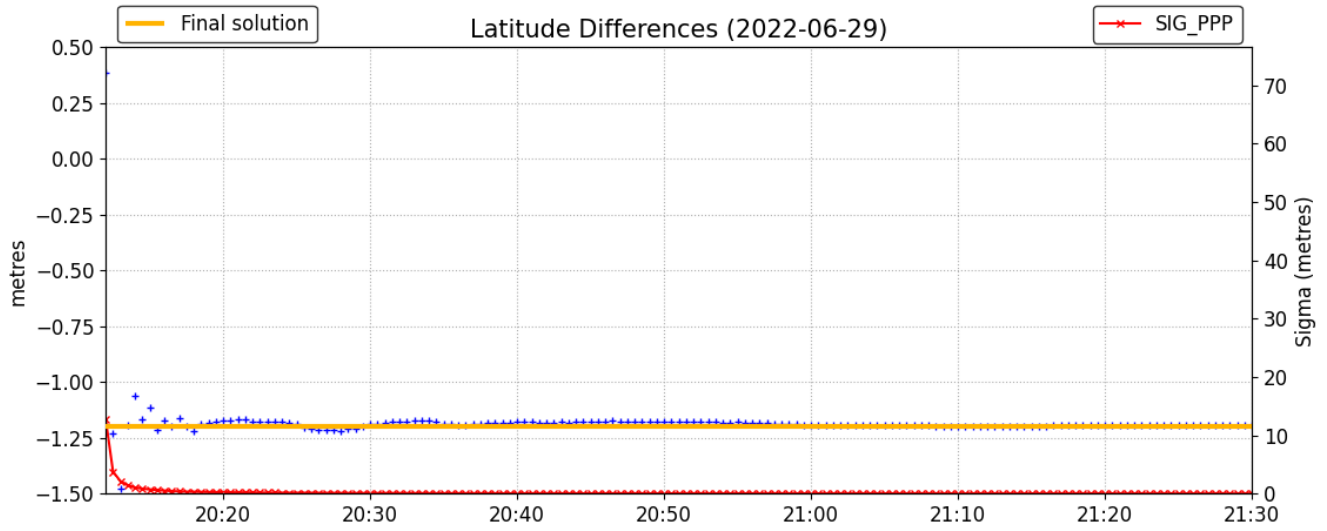
Scale Factors  
0.99963890 (point)  
0.99963732 (combined)

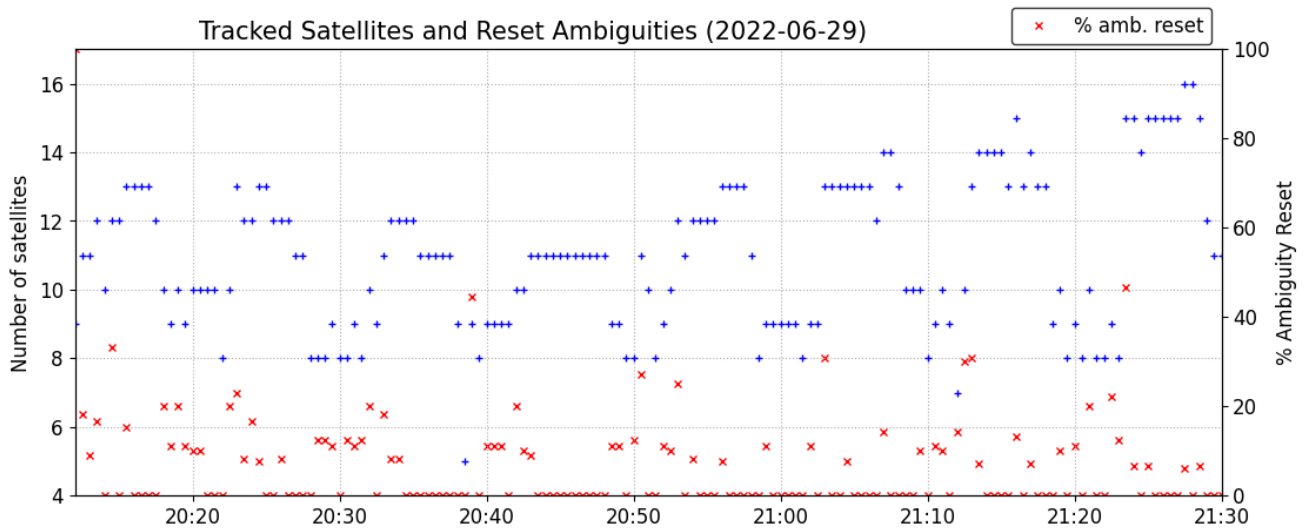
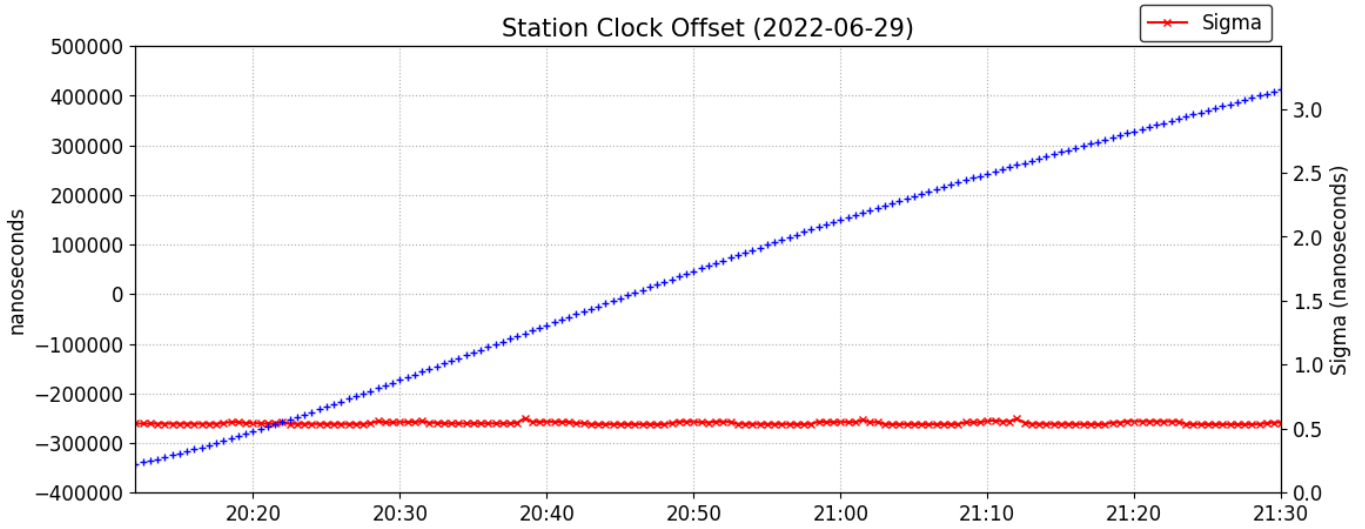
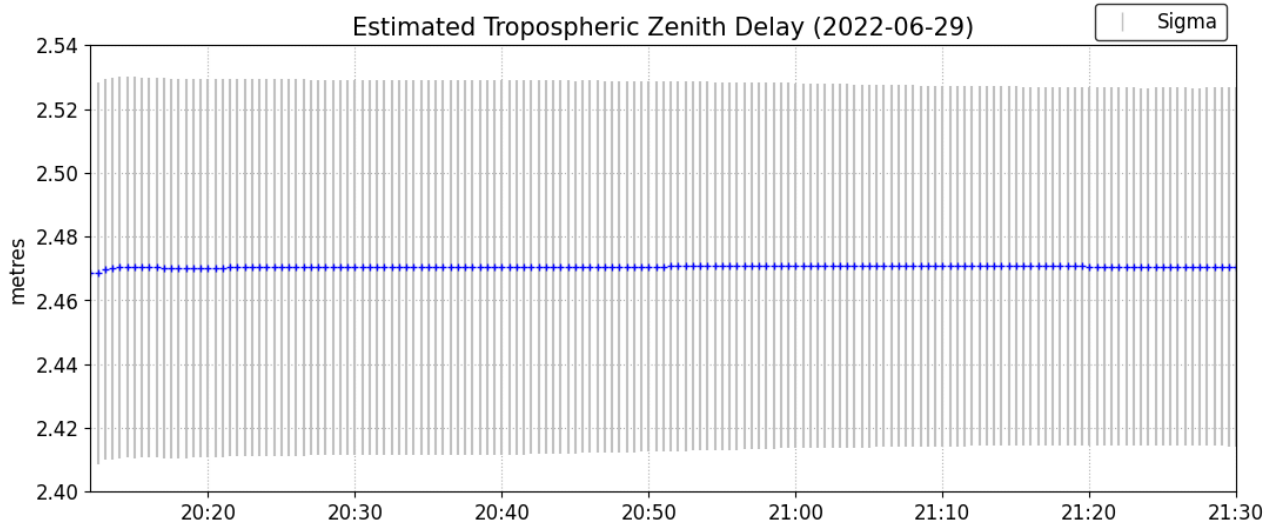
\*(Coordinates from RINEX header used as a priori position)

# Satellite Sky Distribution

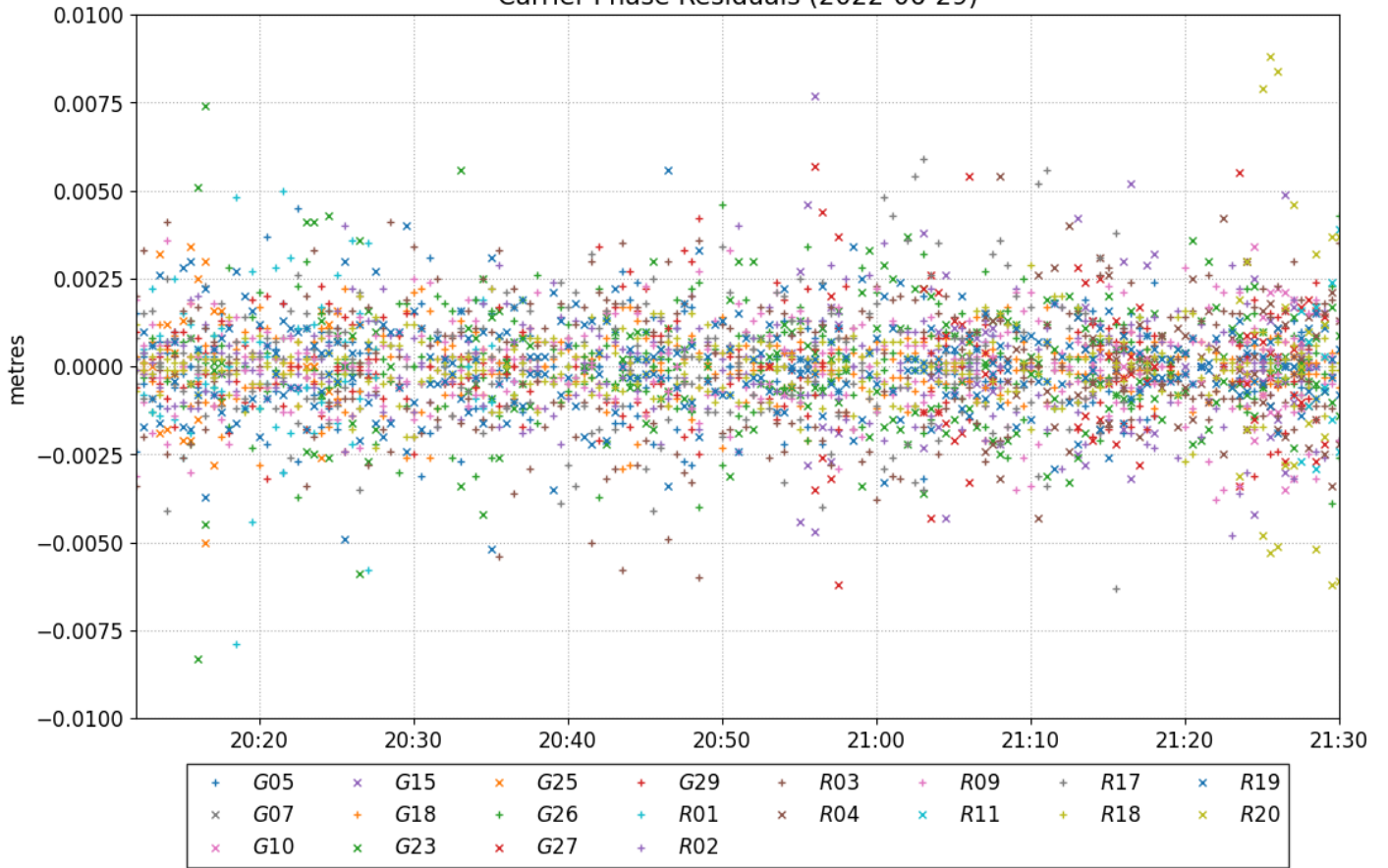


+	G05	+	G18	×	G27	+	R02	+	R09	+	R18
×	G07	×	G23	+	G29	+	R03	×	R11	×	R19
×	G10	×	G25	+	R01	×	R04	+	R17	×	R20
×	G15	+	G26								

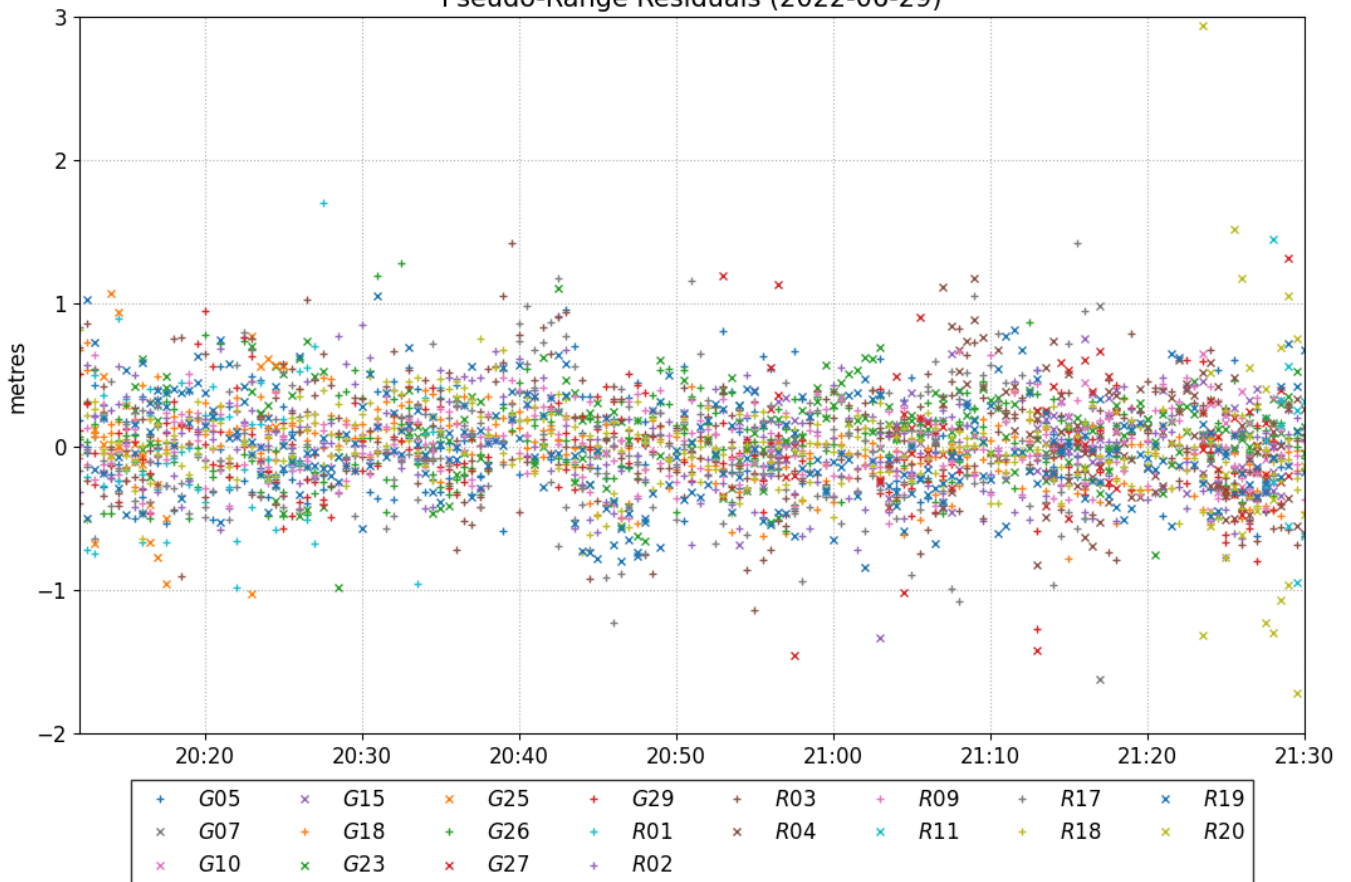




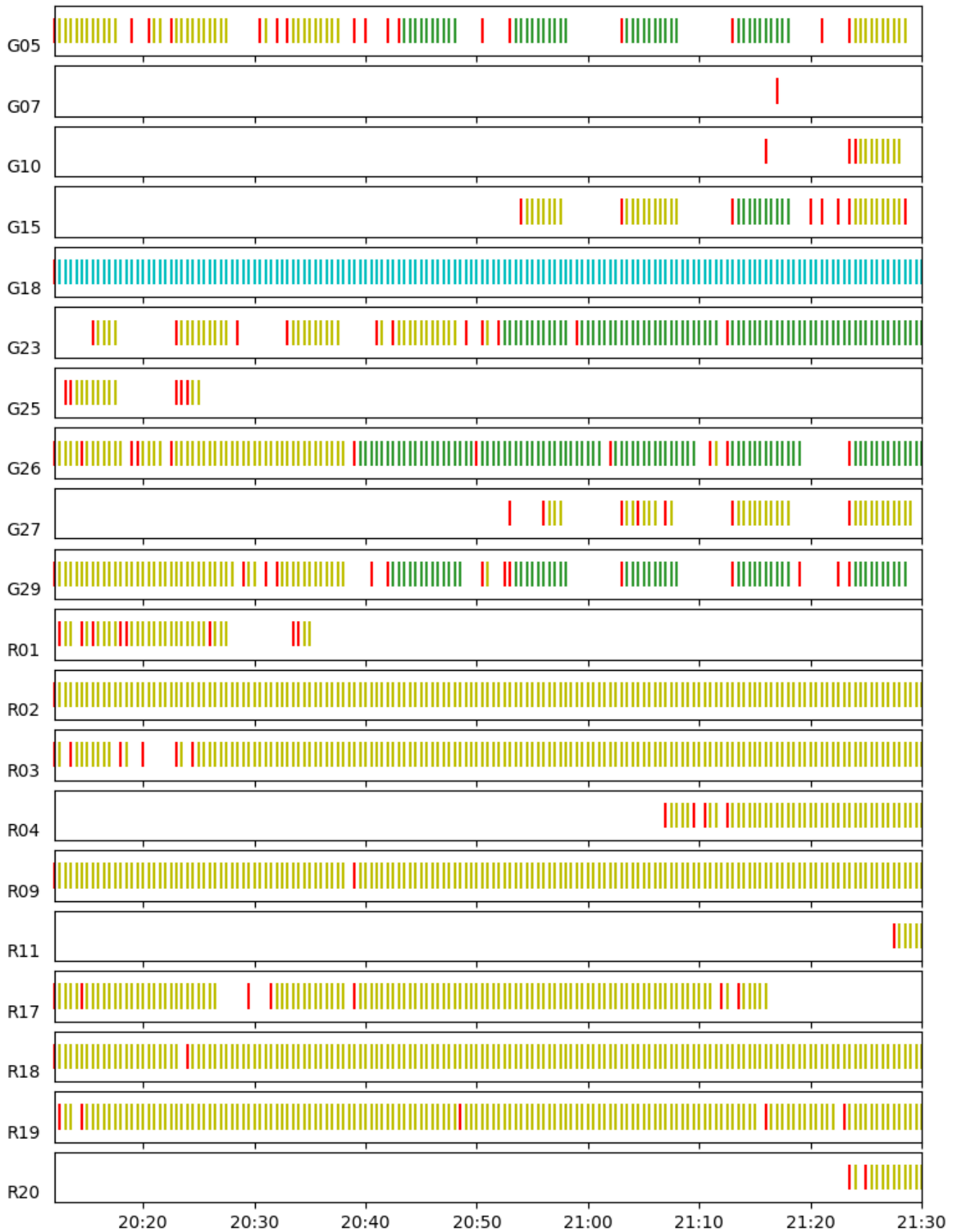
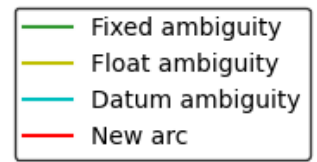
Carrier-Phase Residuals (2022-06-29)



Pseudo-Range Residuals (2022-06-29)



# Phase Ambiguity Status (2022-06-29)



**~~~ Disclaimer ~~~**

**Natural Resources Canada does not assume any liability deemed to have been caused directly or indirectly by any content of its CSRS-PPP online positioning service.**

**If you have any questions, please feel free to contact:**

**Geodetic Integrated Services  
Canadian Geodetic Survey  
Surveyor General Branch  
Natural Resources Canada  
Government of Canada  
588 Booth Street, Room 334  
Ottawa, Ontario K1A 0Y7  
Phone: 343-292-6617**

**Email: [geodeticinformation-informationgeodesique@nrcan-rncan.gc.ca](mailto:geodeticinformation-informationgeodesique@nrcan-rncan.gc.ca)**



**Natural Resources  
Canada**

**Ressources naturelles  
Canada**

**Canada**