

# CSRS-PPP 3.50.3 (2022-03-04)



reach-base\_raw\_202206290103.220  
GCP2middleSB

<b>Data Start</b>	<b>Data End</b>	<b>Duration of Observations</b>	
2022-06-29 01:04:06.99	2022-06-29 02:01:49.00	0:57:42.010	
<b>Processing Time</b>		<b>Product Type</b>	
18:57:43 UTC 2022/09/30		NRCan/IGS Final	
<b>Observations</b>	<b>Frequency</b>	<b>Mode</b>	
Phase and Code	Double	Static	
<b>Elevation Cut-Off</b>	<b>Rejected Epochs</b>	<b>Fixed Ambiguities</b>	<b>Estimation Steps</b>
7.5 degrees	0.00 %	85.20 %	1.00 sec
<b>Antenna Model</b>	<b>APC to ARP</b>	<b>ARP to Marker</b>	
EML_REACH_RS2 NONE	L1 = 0.135 m L2 = 0.137 m	H:0.134m / E:0.000m / N:0.000m	

(APC = antenna phase center; ARP = antenna reference point)

## Estimated Position for reach-base\_raw\_202206290103.220

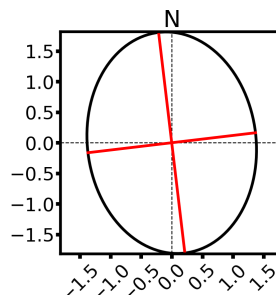
	Latitude (+n)	Longitude (+e)	Ell. Height
<b>ITRF14 (2022.5)</b>	58° 24' 50.06537"	-134° 1' 35.24357"	10.104 m
<b>Sigmas(95%)</b>	0.015 m	0.011 m	0.052 m
<b>A priori*</b>	58° 24' 50.00275"	-134° 1' 35.25743"	1.623 m
<b>Estimated – A priori</b>	1.937 m	0.225 m	8.480 m

**Orthometric Height**  
**CGVD2013**  
**(CGG2013a)**  
**(2022.5)**

7.511 m

(click for height reference information)

**95% Error Ellipse (cm)**  
semi-major: 1.8  
semi-minor: 1.4  
semi-major azimuth: -6° 12' 41.56"



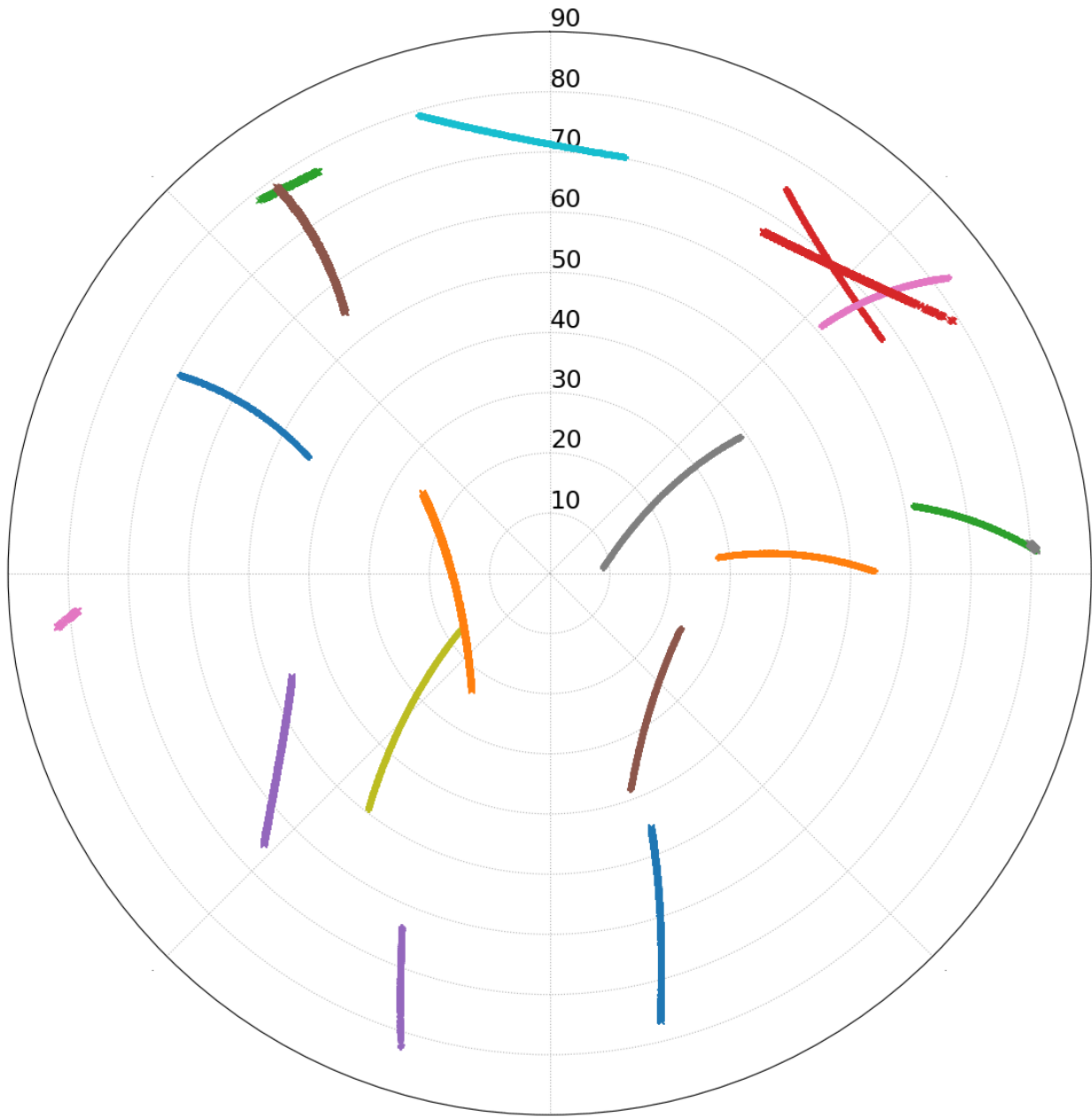
**UTM (North)**  
**Zone 8**

6475204.873 m (N)  
556878.616 m (E)

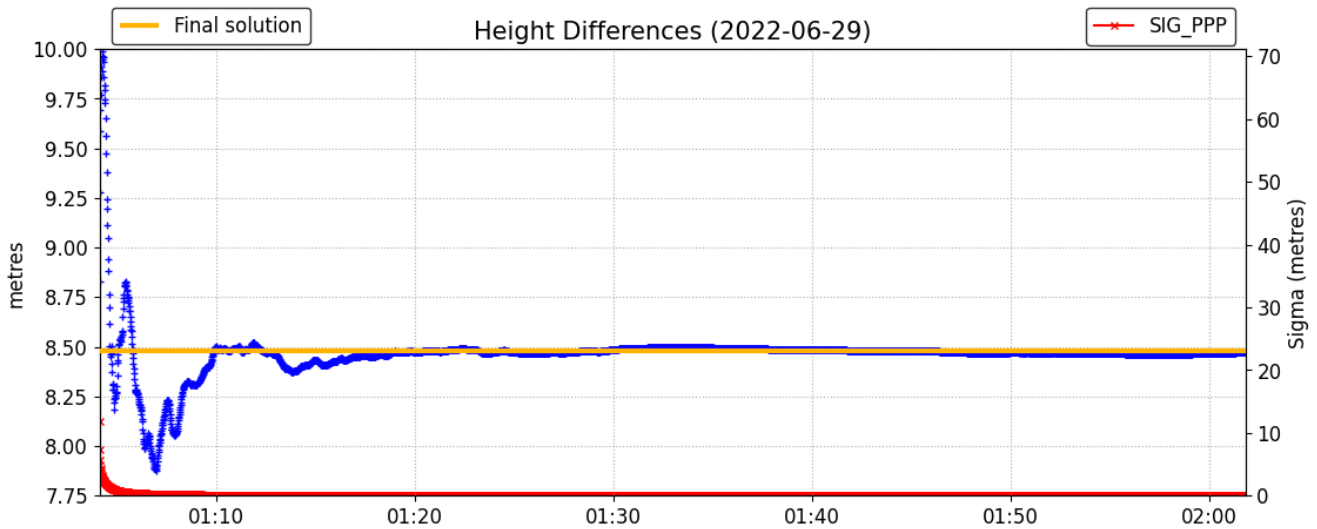
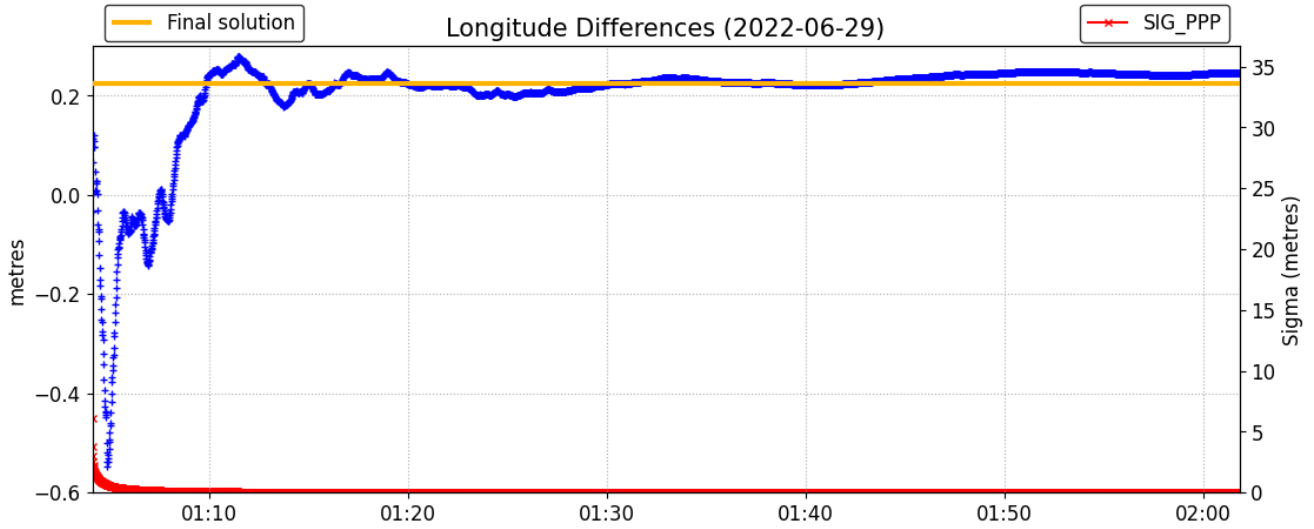
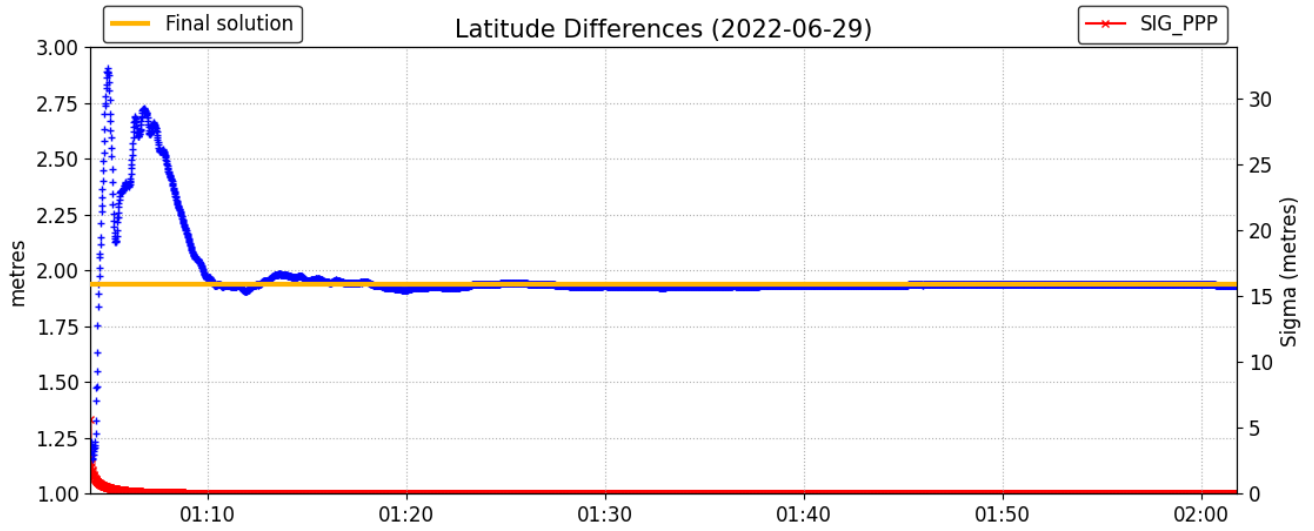
**Scale Factors**  
0.99963966 (point)  
0.99963808 (combined)

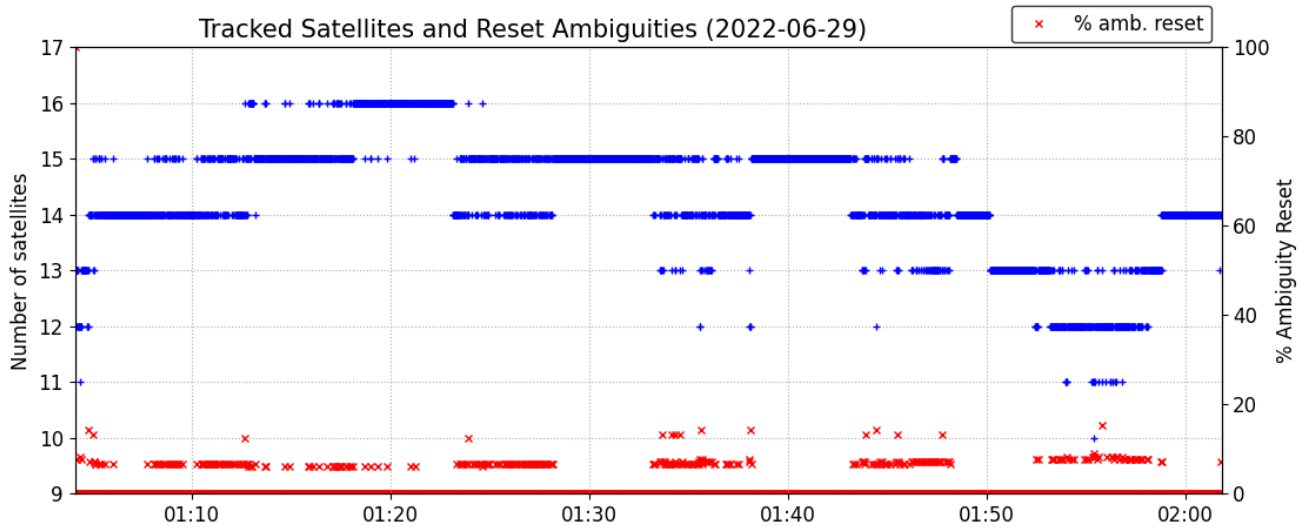
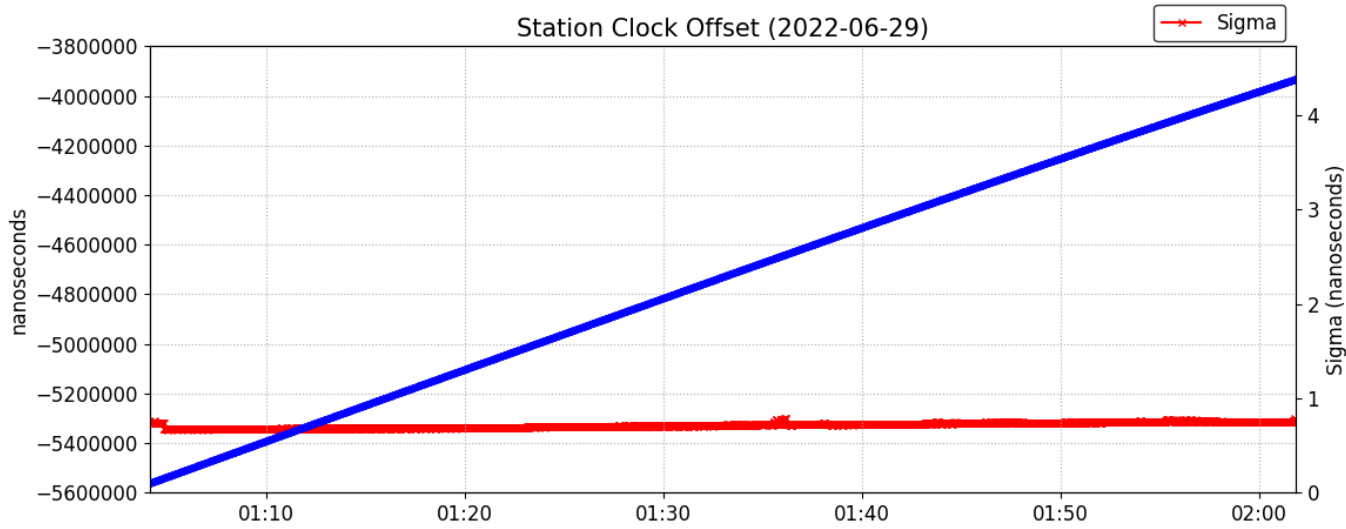
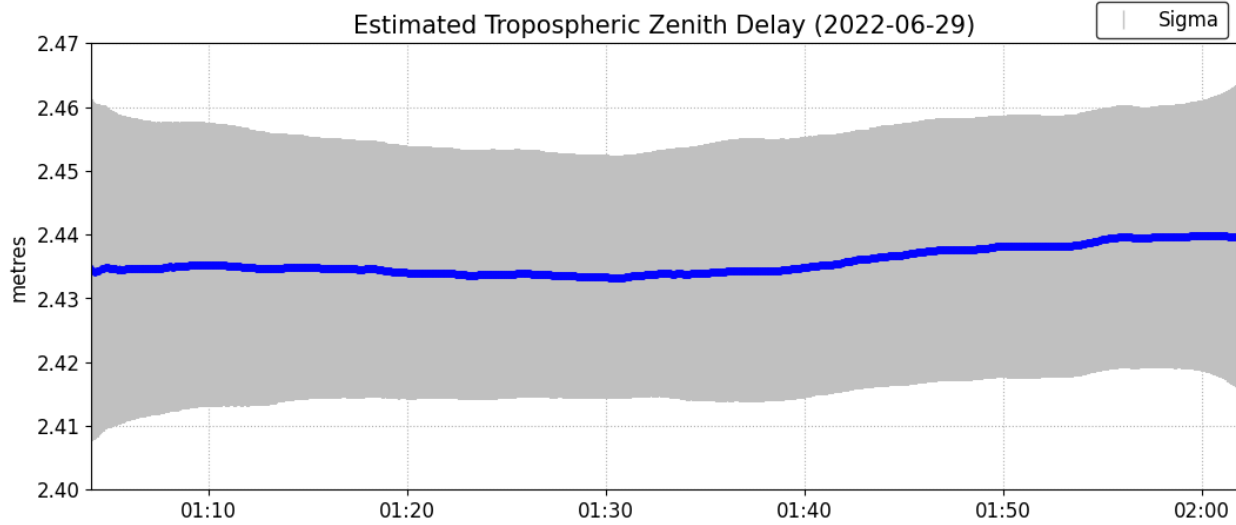
\*(Coordinates from RINEX header used as a priori position)

# Satellite Sky Distribution

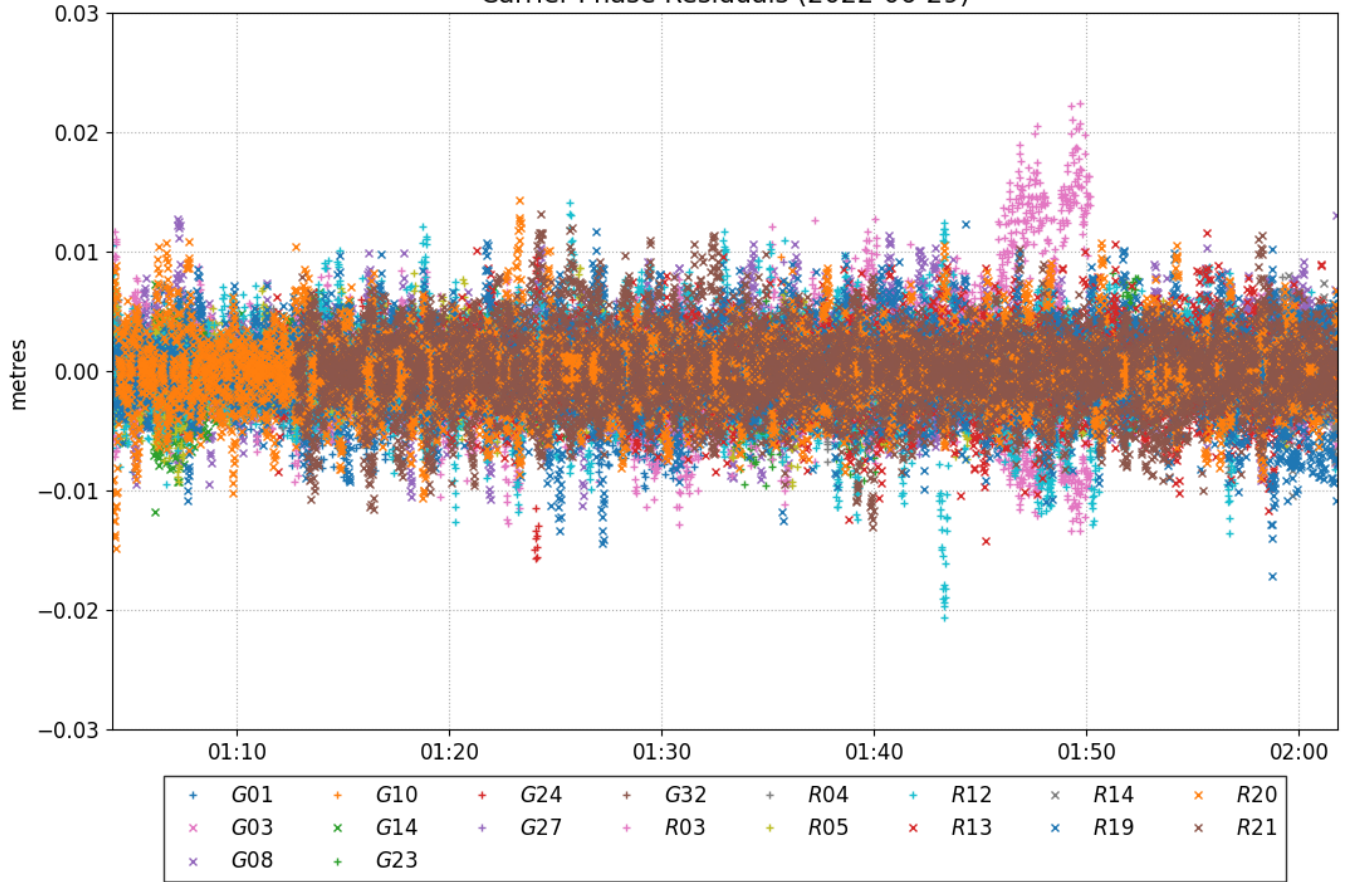


+	G01	+	G10	+	G24	+	R03	+	R12	×	R19
×	G03	×	G14	+	G27	+	R04	×	R13	×	R20
×	G08	+	G23	+	G32	+	R05	×	R14	×	R21

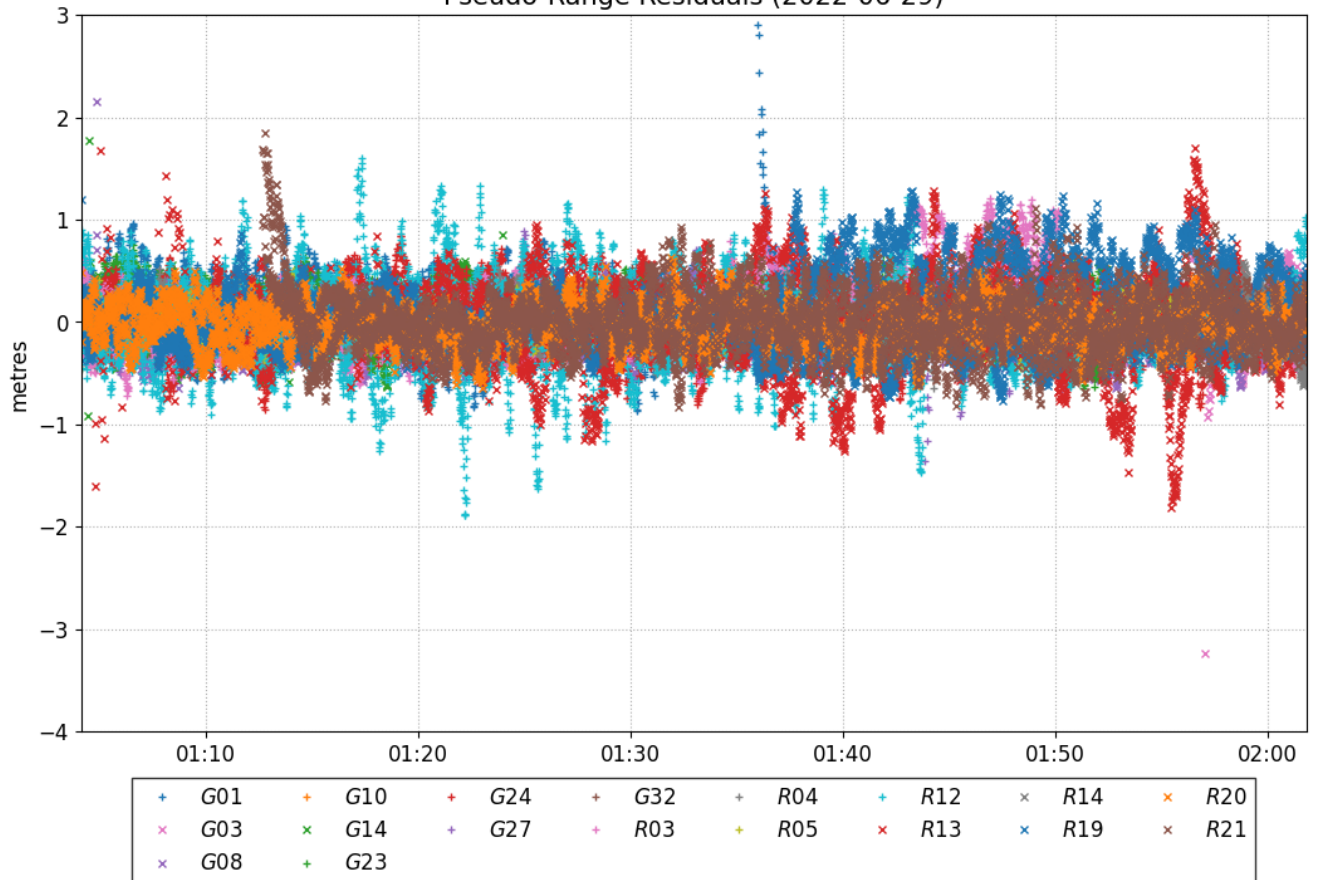




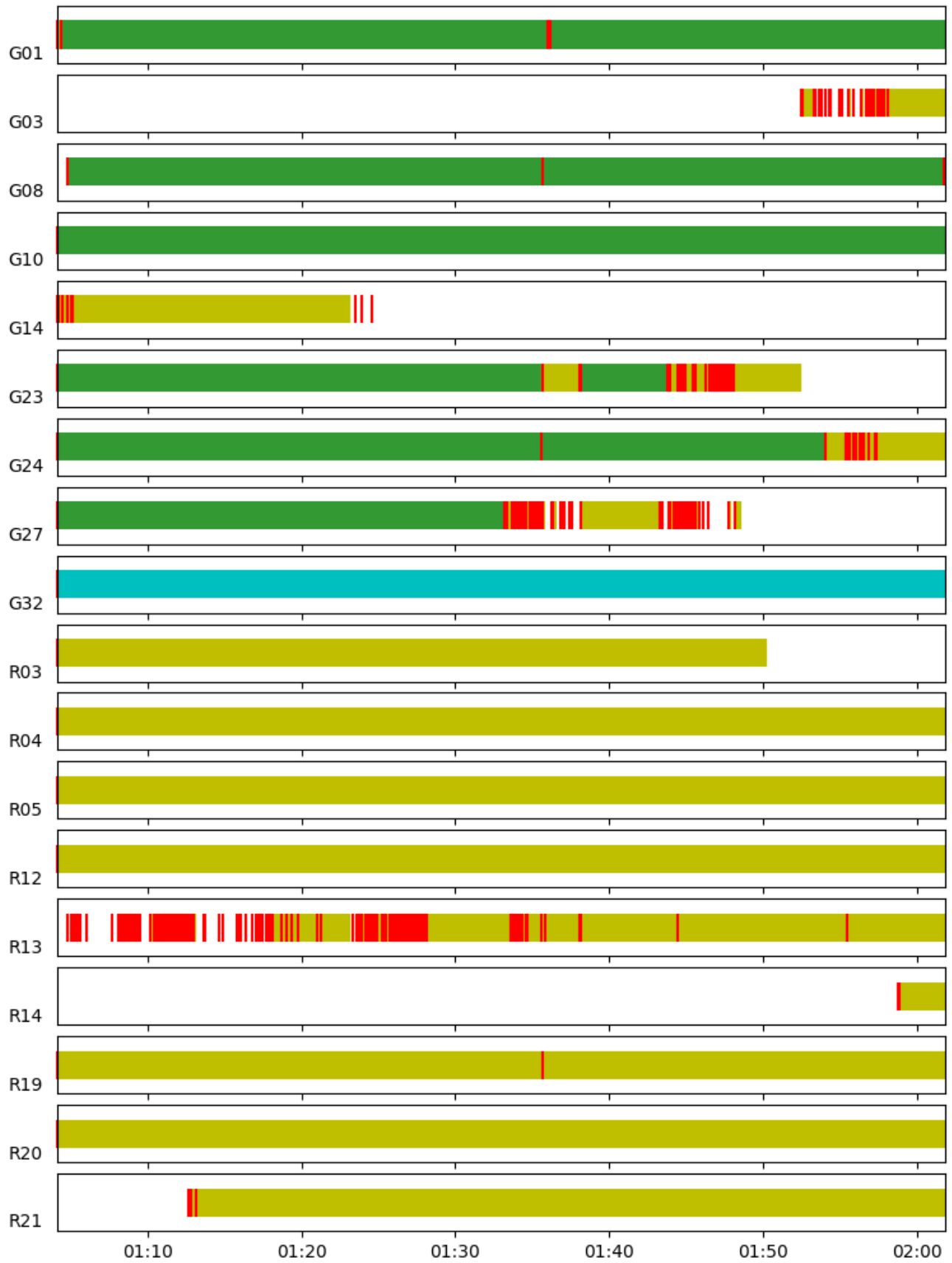
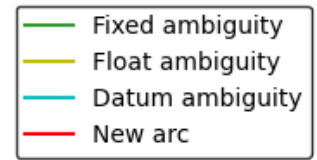
Carrier-Phase Residuals (2022-06-29)



Pseudo-Range Residuals (2022-06-29)



# Phase Ambiguity Status (2022-06-29)



**~~~ Disclaimer ~~~**

**Natural Resources Canada does not assume any liability deemed to have been caused directly or indirectly by any content of its CSRS-PPP online positioning service.**

**If you have any questions, please feel free to contact:**

**Geodetic Integrated Services  
Canadian Geodetic Survey  
Surveyor General Branch  
Natural Resources Canada  
Government of Canada  
588 Booth Street, Room 334  
Ottawa, Ontario K1A 0Y7  
Phone: 343-292-6617**

**Email: [geodeticinformation-informationgeodesique@nrcan-rncan.gc.ca](mailto:geodeticinformation-informationgeodesique@nrcan-rncan.gc.ca)**



**Natural Resources  
Canada**

**Ressources naturelles  
Canada**

**Canada**