

CSRS-PPP 3.50.3 (2022-03-04)



reach-base_raw_202206290318.220
GCP2middleSB

Data Start	Data End	Duration of Observations
2022-06-29 03:18:37.00	2022-06-29 04:43:20.01	1:24:43.010
Processing Time		Product Type
18:57:58 UTC 2022/09/30		NRCan/IGS Final
Observations	Frequency	Mode
Phase and Code	Double	Static
Elevation Cut-Off	Rejected Epochs	Fixed Ambiguities
7.5 degrees	0.00 %	54.89 %
		Estimation Steps
		1.00 sec
Antenna Model	APC to ARP	ARP to Marker
EML_REACH_RS2 NONE	L1 = 0.135 m L2 = 0.137 m	H:0.134m / E:0.000m / N:0.000m
(APC = antenna phase center; ARP = antenna reference point)		

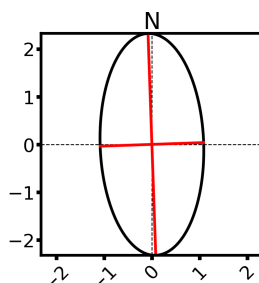
Estimated Position for reach-base_raw_202206290318.220

	Latitude (+n)	Longitude (+e)	Ell. Height
ITRF14 (2022.5)	58° 24' 35.76489"	-134° 2' 9.46290"	10.880 m
Sigmas(95%)	0.019 m	0.009 m	0.059 m
A priori*	58° 24' 36.03721"	-134° 2' 9.67781"	-5.671 m
Estimated – A priori	-8.426 m	3.490 m	16.551 m

Orthometric Height
CGVD2013
(CGG2013a)
(2022.5)

8.290 m
(click for height reference
information)

95% Error Ellipse (cm)
semi-major: 2.3 cm
semi-minor: 1.1 cm
semi-major azimuth: -1° 0' 24.03"

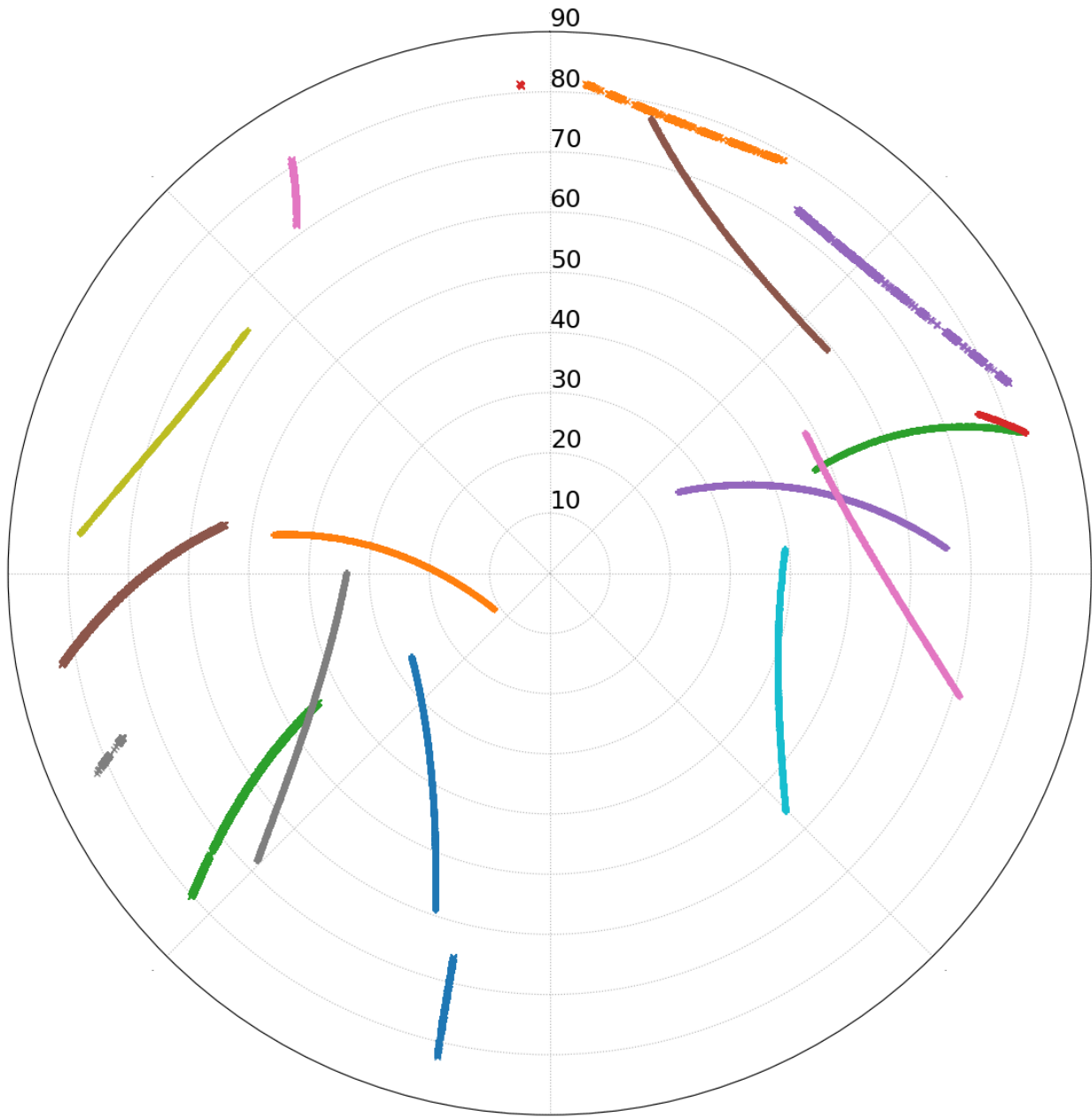


UTM (North)
Zone 8

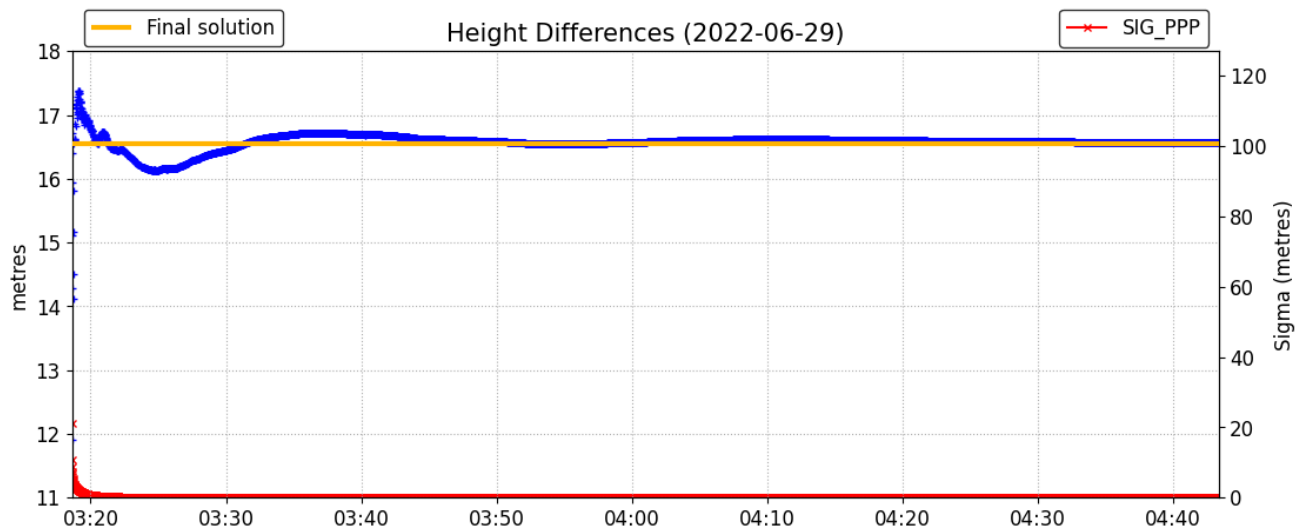
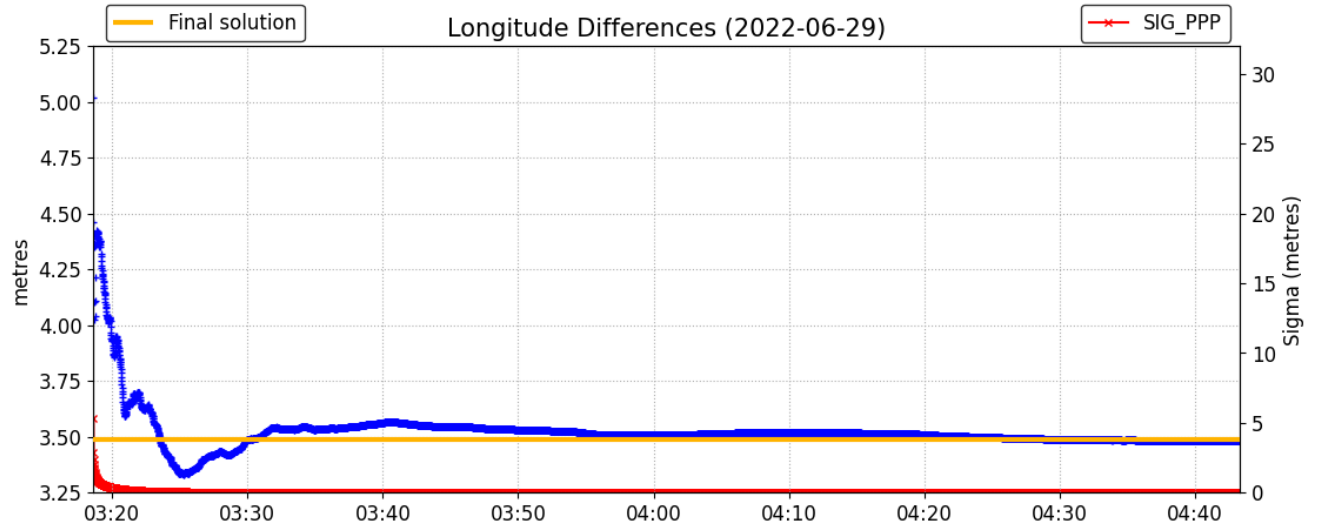
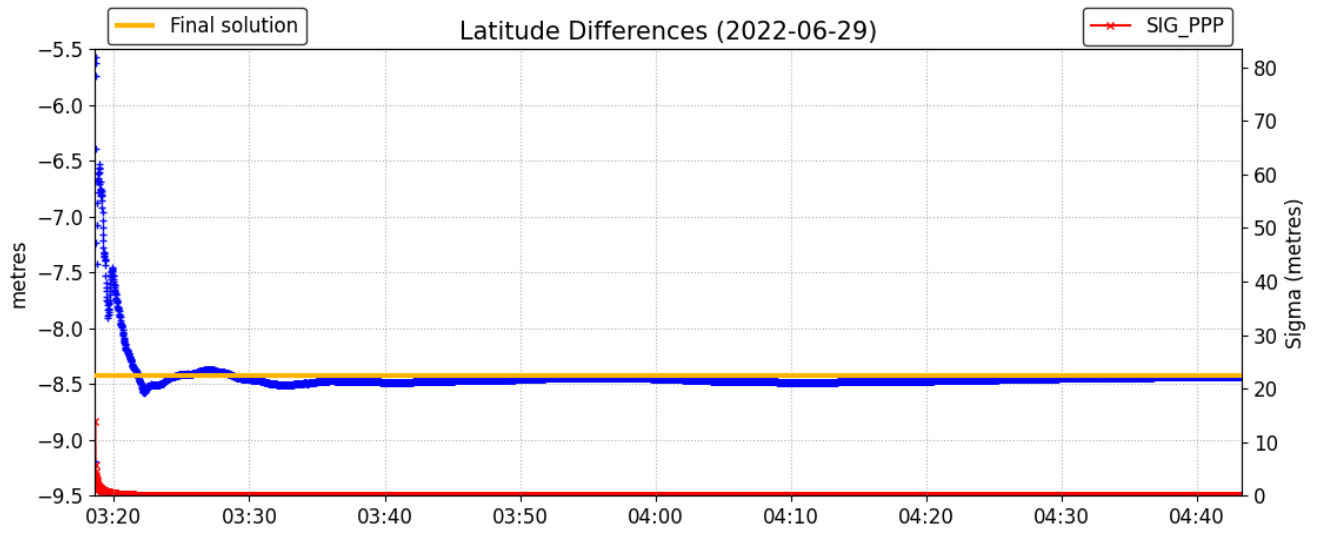
6474754.619 m (N)
556329.634 m (E)
Scale Factors
0.99963890 (point)
0.99963719 (combined)

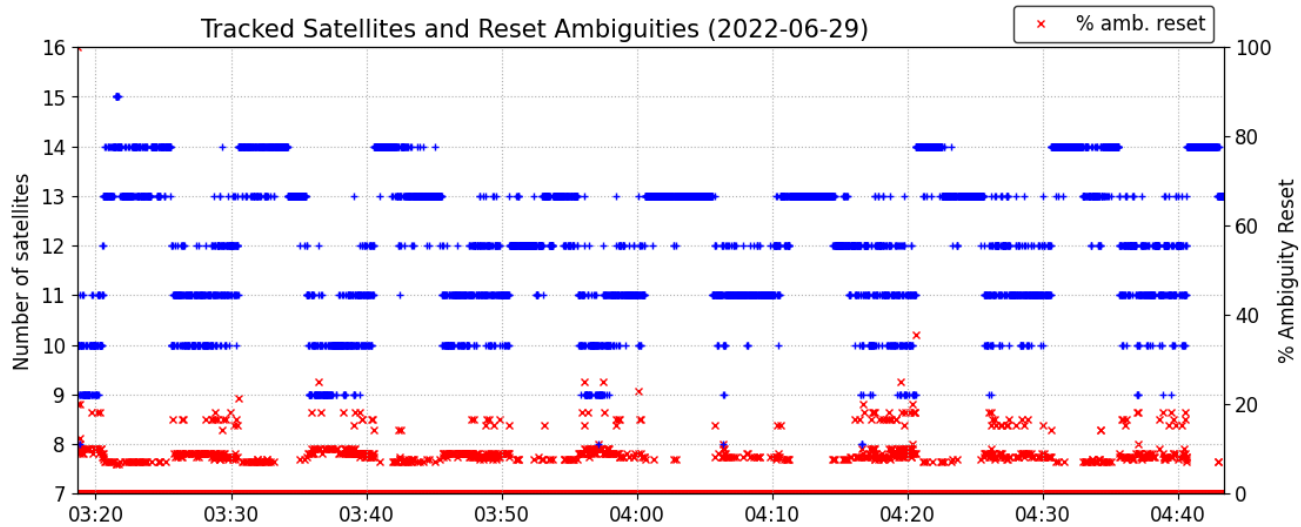
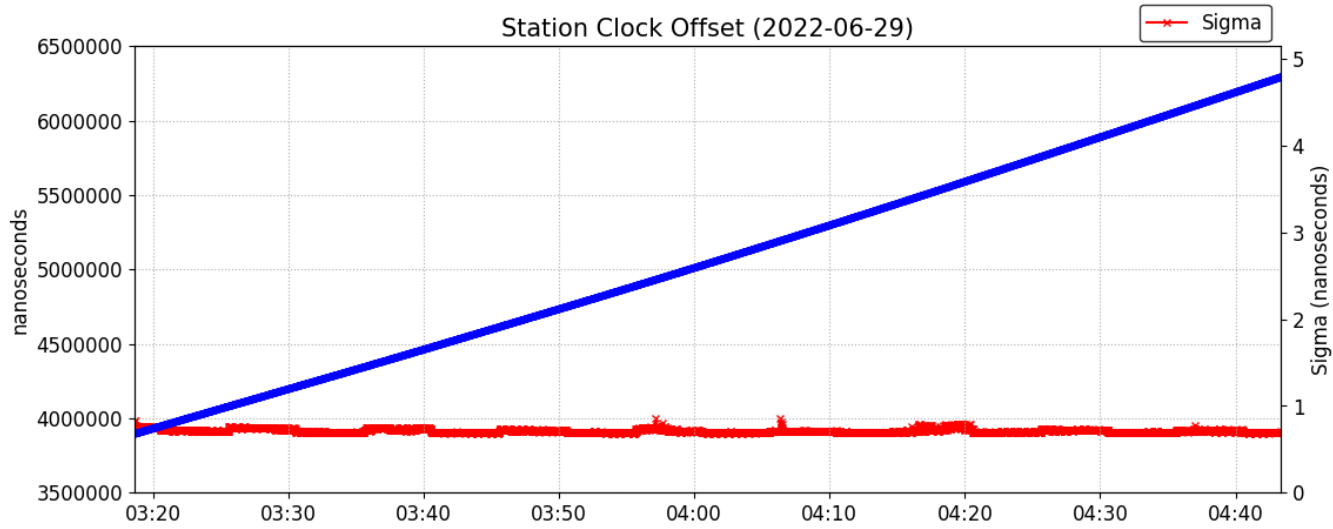
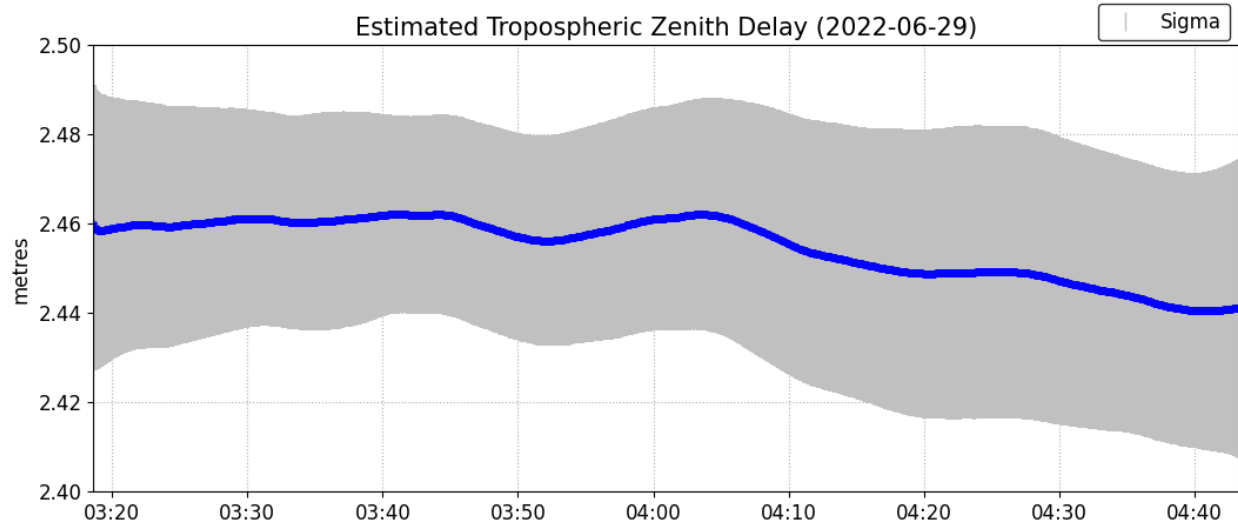
*(Coordinates from RINEX header used as a priori position)

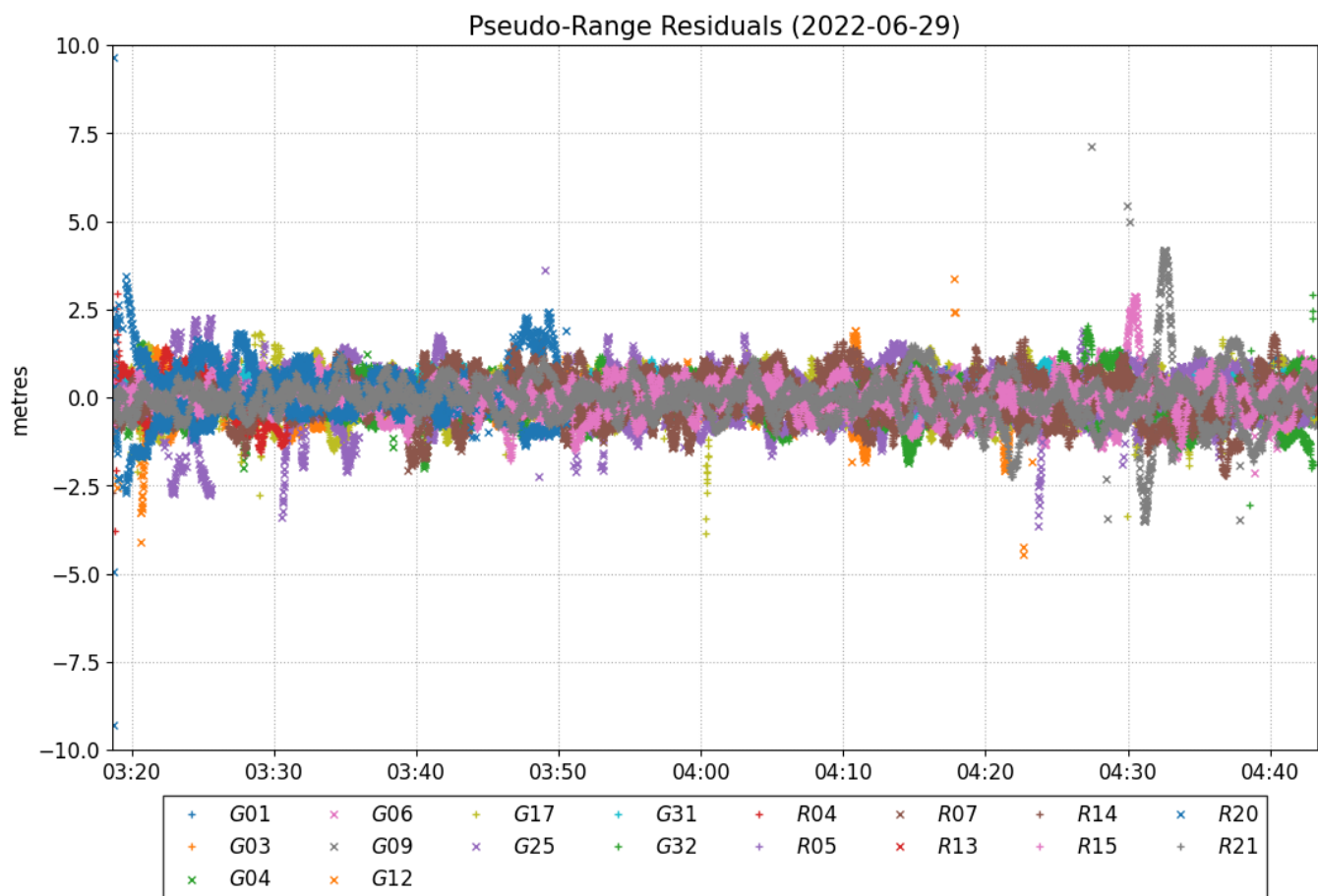
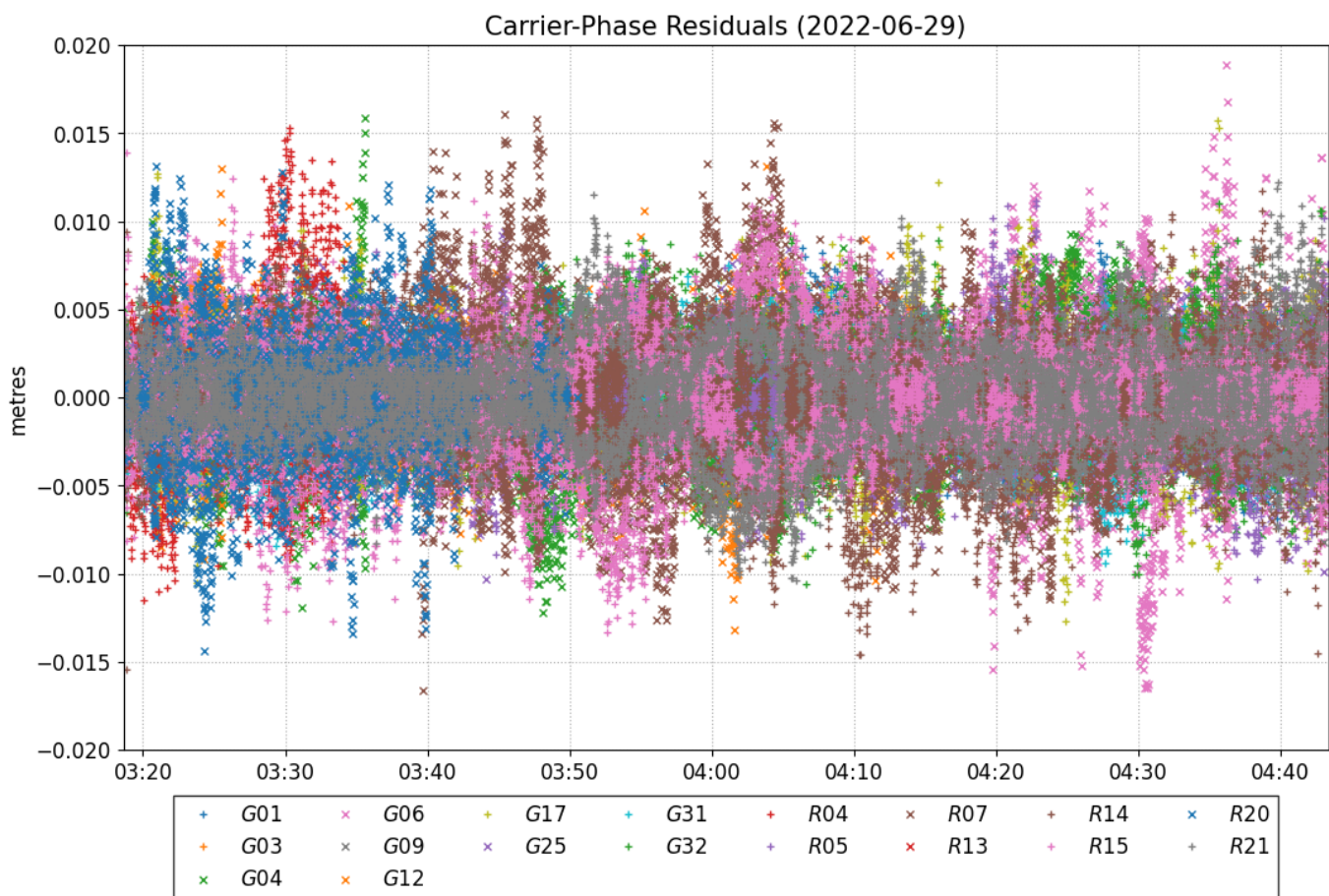
Satellite Sky Distribution



+	G01	×	G06	+	G17	+	G32	×	R07	+	R15
+	G03	×	G09	×	G25	+	R04	×	R13	×	R20
×	G04	×	G12	+	G31	+	R05	+	R14	+	R21







Phase Ambiguity Status (2022-06-29)



~~~ Disclaimer ~~~

Natural Resources Canada does not assume any liability deemed to have been caused directly or indirectly by any content of its CSRS-PPP online positioning service.

If you have any questions, please feel free to contact:

**Geodetic Integrated Services
Canadian Geodetic Survey
Surveyor General Branch
Natural Resources Canada
Government of Canada
588 Booth Street, Room 334
Ottawa, Ontario K1A 0Y7
Phone: 343-292-6617**

Email: geodeticinformation-informationgeodesique@nrcan-rncan.gc.ca



**Natural Resources
Canada**

**Ressources naturelles
Canada**

Canada