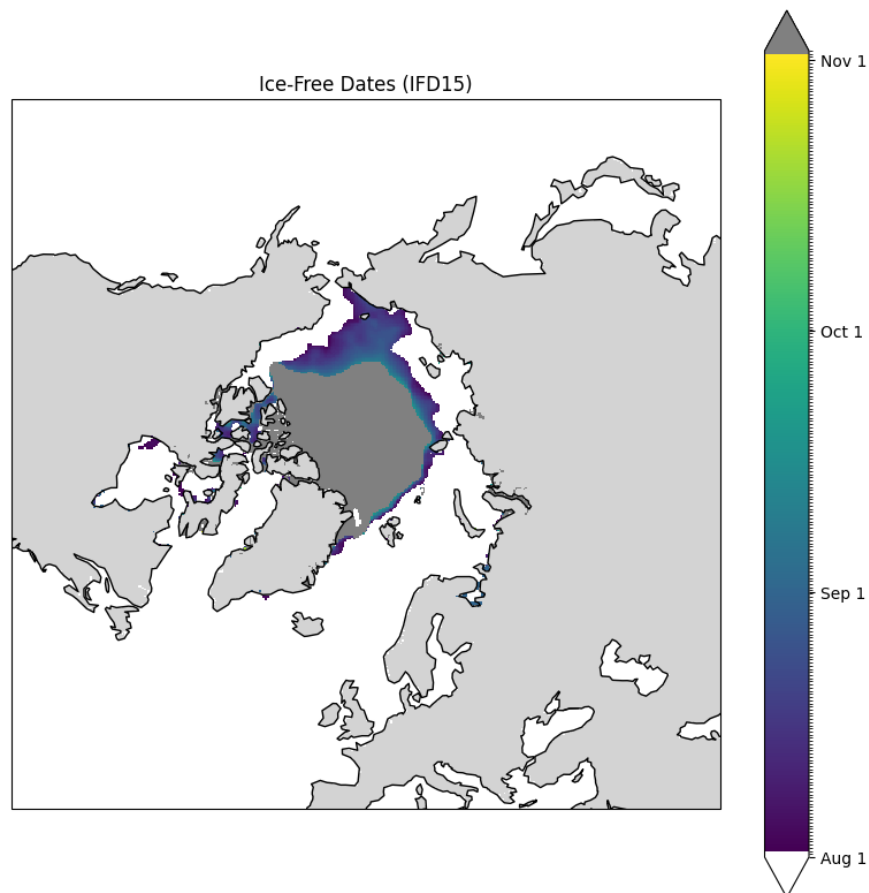


IceNet

British Antarctic Survey, August 2024 SIPN Submission

IceNet is a probabilistic, deep learning sea ice forecasting system. The reference implementation utilises ensemble modelling of U-Net networks to generate daily forecasts of sea ice condition, trained on climate reanalysis and sea ice observational data. Forecasts from the original IceNet research model submitted in a previous contribution call with the identifier of “IceNet1”. At the time, it was based on code developed for publication in Nature Communications which trained on climate simulations and observational data to forecast the next 6 months of monthly-averaged sea ice concentration maps. The latest operational IceNet library generates daily forecasts for a 93-day lead time which is being used for outlook generation. An updated introductory run-through of the refactored library can be found in the [EDS Book](#) [Byrne and Ubald, 2024]

For the August contribution, full Sea Ice Concentration fields have been submitted for the pan-Arctic and Antarctic regions (forecasting from 1st of August 2024 to 1st of November 2024), and the computation of Ice-Free Dates up to the available forecast lead time.



References:

- Tom R Andersson, J Scott Hosking, María Pérez-Ortiz, Brooks Paige, Andrew Elliott, Chris Russell, Stephen Law, Daniel C Jones, Jeremy Wilkinson, Tony Phillips, James Byrne, Steffen Tietsche, Beena Balan Sarojini, Eduardo Blanchard-Wrigglesworth, Yevgeny Aksenov, Rod Downie, and Emily Shuckburgh. Seasonal arctic sea ice forecasting with probabilistic deep learning. *Nature Communications*, 12:5124, 2021. URL: <https://doi.org/10.1038/s41467-021-25257-4>, doi:10.1038/s41467-021-25257-4.
- Byrne, J., Ubald, B. N. and This EDS book notebook contributors (2024) 'Sea ice forecasting using the IceNet library (Jupyter Notebook) published in the Environmental Data Science book'. Zenodo. doi: 10.5281/zenodo.12640158.
- ERA5: Hersbach, H., Bell, B., Berrisford, P., Biavati, G., Horányi, A., Muñoz Sabater, J., Nicolas, J., Peubey, C., Radu, R., Rozum, I., Schepers, D., Simmons, A., Soci, C., Dee, D., Thépaut, J-N. (2023): ERA5 hourly data on single levels from 1940 to present. Copernicus Climate Change Service (C3S) Climate Data Store (CDS), DOI: 10.24381/cds.adbb2d47
- OSI SAF: OSI SAF Global sea ice concentration climate data record 1978-2020 (v3.0, 2022), OSI-450-a, doi:10.15770/EUM_SAF_OSI_0013. EUMETSAT Ocean and Sea Ice Satellite Application Facility.