

# SEA ICE OUTLOOK

## 2024 June Report

By ASIC, NIPR

### Contributor

Label: ASIC, NIPR

### Contributors

Motomu Oyama (National Institute of Polar Research, Japan)

Hironori Yabuki (National Institute of Polar Research, Japan)

Noriaki Kimura (The University of Tokyo, Japan)

Contact: asiio@nipr.ac.jp

### Executive summary

Monthly mean ice extent in September will be about 4.898 million square kilometers. Our prediction is based on a statistical way using satellite microwave sensor data and reanalysis data. We used the ice thickness (accumulated ice convergence) and ice age on April 30. Predicted ice concentration map from July 1 to September 20 is available on our website:

[https://www.nipr.ac.jp/sea\\_ice/e/forecast/2024-05-30-1/](https://www.nipr.ac.jp/sea_ice/e/forecast/2024-05-30-1/)

### Type of Outlook method:

Statistical

### Dataset

Ice velocity: Daily sea-ice velocity of Kimura Dataset (Kimura et al., 2013), between April 30 2003 and April 30 2023 except for between September 28 2011 and July 2 2012 for AMSR-E/AMSR2 and Daily sea-ice velocity from TOPAZ4, between September 28 2011 and July 2 2012.

Ice concentration: 10km grid data distributed by Arctic Data Archive System (<https://ads.nipr.ac.jp>)

Prediction of September pan-Arctic extent as monthly average in million square kilometers.

4.898 million square kilometers

### Short explanation of Outlook method.

We predicted the Arctic sea-ice cover from coming July 1 to September 20, using the satellite microwave sensors data, AMSR-E (2002/03-2010/11), AMSR2 (2012/13-2022/23), and reanalysis data, TOPAZ4 (2011/12). The analysis method is based on our research (Kimura et al., 2013). First, we expect the ice thickness distribution on April 30 from redistribution (divergence/convergence) of sea ice during December and April. Additionally, ice age distribution on April 30 was estimated from the backward tracking of sea ice. And then, by using the mean sea ice drift velocity since May over the past four years, effects of sea ice transport from May 1 to the prediction date was considered. Finally, we calculated the summer ice concentration by multiple regression analysis based on the derived ice thickness and ice age.

Pan-Arctic sea ice extent anomaly million square km.

-0.544 (4.898-4.940)

### Reference

Kimura, N., A. Nishimura, Y. Tanaka, and H. Yamaguchi, Influence of winter sea ice motion on summer ice cover in the Arctic, *Polar Research*, 32, 20193, 2013.

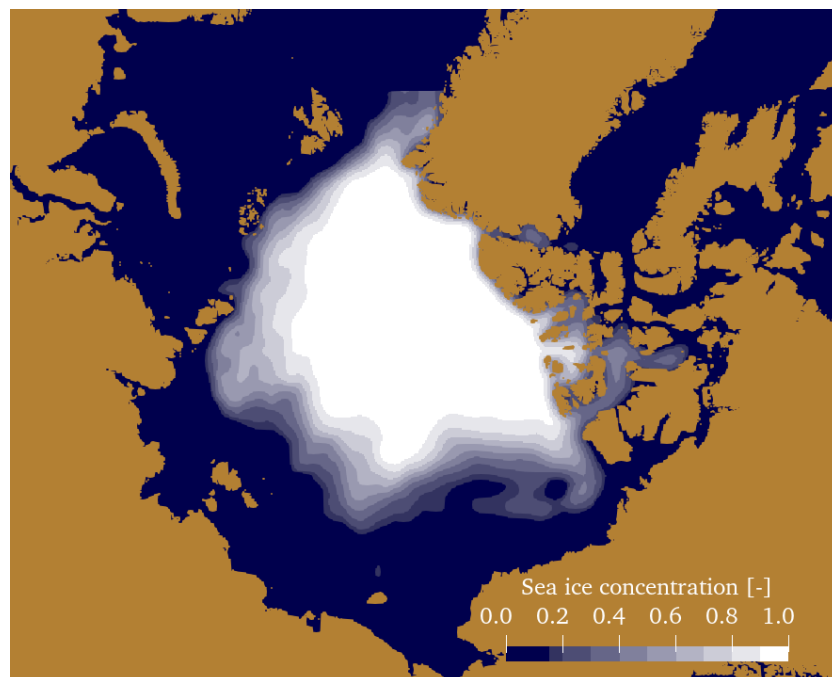


Fig: Predicted monthly-mean ice concentration in September 2024.