



Hello September! The Arctic Data Center is now accepting applications for our data science training, so please spread the word to your networks. In celebration of [NCEAS](#)' (The National Center for Ecological Analysis & Synthesis) 30th Anniversary, we will be hosting a program display to connect with the Santa Barbara community and share more about the importance of Arctic research. Additionally, check out our new website updates that include a new ['About'](#) section. Read on for more details!

Our Upcoming Virtual Workshop

NSF
ARCTIC Data Center

Virtual Training

**REPRODUCIBLE
APPROACHES TO
ARCTIC RESEARCH
USING R**

MARCH 2-6, 2026

APPLICATIONS
CLOSE OCTOBER 31, 2025

For more information, visit the following:

 <https://arcticdata.io/training/>

Disclaimer: This will be the **ONLY** data science training offered by the Arctic Data Center in 2026.

Join us for a five-day **virtual** workshop designed for Arctic researchers with proficient R programming skills who want to take their data science skills to the next level. The training will

cover best practices in data management, tools for cleaning, analyzing, and visualizing data, and methods for documenting and preserving data at the Arctic Data Center.

Application Deadline: October 31, 2025

Please note this will be the **ONLY** data science training offered by our team in 2026. For any questions, contact training@arcticdata.io.

Some topics we'll cover include:

- Literate analysis (RMarkdown)
- Data wrangling (tidyr/dplyr)
- Data publishing
- Data visualization (ggplot2/sf)
- Code versioning (git)
- Ethical data procedures (CARE Principles)

[Link to Apply](#)



[August Dataset Highlight](#)

Permafrost Grown: Farmers and Researchers Co-Produce Knowledge on Permafrost-Agriculture Interactions

The Permafrost Grown project brings together Alaskan farmers and scientists to study how thawing permafrost affects agriculture, infrastructure, and community livelihoods. Using tools from soil surveys and drones to tree-ring analysis and farm trials, the team is developing “permafrost conscious” farming practices that balance scientific insights with local knowledge. In this dataset highlight, Melissa Ward Jones details how their collaborative approach advances research and helps Arctic communities adapt to rapid environmental change.

[Read Dataset Highlight](#)

[August Collaborator Highlight](#)

QGreenland

[QGreenland](#) is a free, open-source mapping

tool that brings together many datasets into an all-in-one GIS platform for studying and teaching about Greenland. Developed through NSF-funded collaborations, it improves access to geospatial data, supports research and education, and continues to expand through projects like QGreenland-Net and the [QGreenland Data Portal](#). Keep your eyes peeled at Greenland Science Week to see some of their team there!

[Read Collaborator Highlight](#)



Arctic Data Center

Driving Technological Innovation

The Arctic Data Center drives technological innovation by developing tools and infrastructure that support data discovery, interoperability, and long-term reuse—enabling AI-driven insights and translational research. Through high-quality curation, open access, and user-friendly visualization platforms, the Center ensures that Arctic data informs real-world decisions, supports cross-disciplinary science, and serves society and national interests.

The Impact of the Arctic Data Center

- AI** Through its commitment to quality metadata, machine-readable formats, and open access, the Arctic Data Center positions Arctic science for **AI-powered breakthroughs**. Expanding the availability of well-structured, high-resolution datasets enables advanced modeling and predictive analytics for **translational research** and national-scale decision-making.
- Tools** The Arctic Data Center has piloted data exploration and visualization tools within its **data portals** and **advanced search features**, enabling both users and non-specialists to engage with complex Arctic datasets and AI-generated projects. Evolving these tools promotes practical use of research data that might otherwise be accessible only to domain experts.
- Innovation** Innovations like our automated data assessments and our portal viewer improve data quality and access, ensuring that publicly funded research yields the **greatest possible scientific and societal return**. The technical advancements at the Center establish a strong foundation that enables continued progress and transformative developments in data stewardship.

The Arctic Data Center is supported by the National Science Foundation under NSF Award Numbers 1546024 and 2042102.

New Website Updates

Our website has a new ‘About’ section that highlights our updated mission and priorities, introduces our team and Science Advisory Board, and shares new one-pagers detailing what the Arctic Data Center does and where we're headed. One of the one-pagers is shown on the right. Check out our [website](#) to see them all!

[Explore One-Pagers](#)

Partner News & Opportunities



COLD CLIMATE
HOUSING RESEARCH CENTER

Socioeconomic Dimensions of Arctic Infrastructure & Housing

Join ARCUS and CCHRC for a webinar featuring guest presentations and a panel discussion exploring the intersection of climate, built environments, and social systems in northern communities.

REGISTER NOW AT
<http://bit.ly/4SDIMBY>

WEDNESDAY, 10 SEPTEMBER
10-11 AM AKT/2-3 PM ET

September 10, 2025 at 10 AM AKT

ARCUS–CCHRC Webinar Panel Discussion: Socioeconomic Dimensions of Arctic Infrastructure & Housing

On Sept 10, 2025, ARCUS + CCHRC are hosting an online panel on the socioeconomic dimensions of Arctic infrastructure &

housing. Join researchers as they discuss housing challenges, resilience, and innovation in Arctic communities.

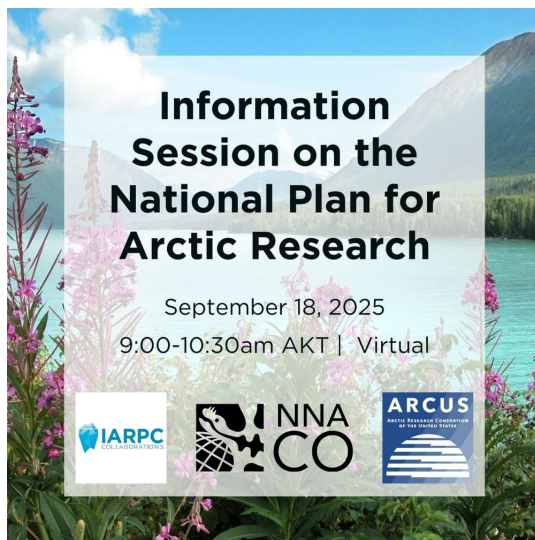
Register for Event

September 19 at 10 AM AKT

End of an Era: 2025 Final ARCUS Community Call

Join Arctic Research Consortium of the United States (ARCUS) for a 90-min virtual gathering to reflect, share memories, and celebrate ARCUS's legacy of connecting the Arctic research community. Please [register](#) for event!

Register for Community Call



September 18, 2025 at 9 AM AKT

Information Session on the National Plan for Arctic Research

The Interagency Arctic Research Policy Committee (IARPC) Secretariat, the Navigating the New Arctic Community Office (NNA-CO), and the Arctic Research Consortium of the United States (ARCUS) are co-hosting a virtual information session to share details on the planned update to the U.S. National Plan for Arctic Research. The session will outline the process for providing public input and highlight upcoming opportunities to participate in focused topic discussions.

Register for Event

September 25, 2025 at 9:00 AM AKT

NNA Community Listening Session on

the National Plan for Arctic Research

The Navigating the New Arctic Community Office is hosting a virtual listening session to gather input directly from the NNA community on the planned update to the U.S. National Plan for Arctic Research. The session will outline the process for providing public input, as well as gather attendee input that will be compiled by the NNA-CO and submitted through the federal register. A detailed agenda will be shared in advance.

Register for Event



Wednesday, September 24, 2025 at 7 AM AKT



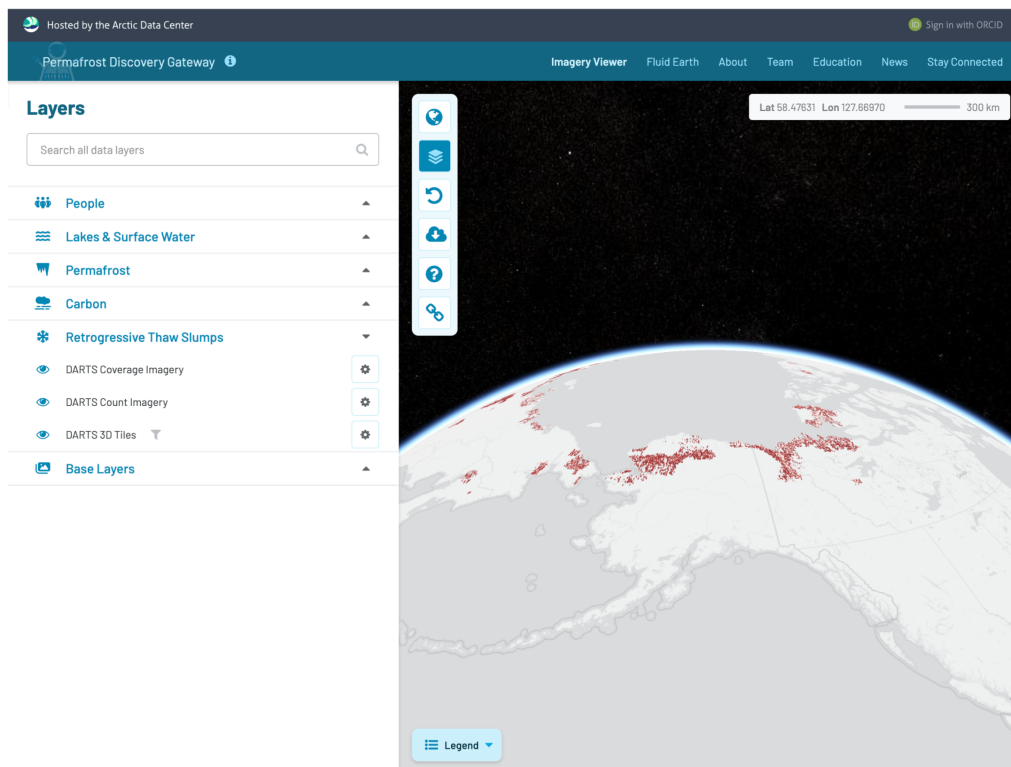
Are you interested in expanding your polar international network and building potential collaborations? The [Polar Science Early Career Community Office \(PSECCO\)](#) is excited to host a virtual 1.5-hour networking event focused on building international connections within the early career community.

This event will be discussion-based, and participants will be sorted into breakout rooms to explore possible future connections with others at the event. To help connect you with the right individuals, they will ask you a few questions during registration about what you are looking to get out of the event and the types of collaborations you are interested in. Come ready to engage and expand your polar network!

The deadline to register for this event is on Wednesday, September 17, 2025. To learn more about the event and to register, visit this [webpage](#).

New Paper Releases

DARTS: Multi-year database of AI-detected retrogressive thaw slumps in the circum-arctic permafrost region



In this published article, a DARTS [dataset](#) from the Arctic Data Center was used to map more than 43,000 thaw slumps across 1.6 million km² of Arctic and Subarctic permafrost using satellite imagery and deep learning. Covering 2018–2023, DARTS provides openly available datasets, code, and metadata to help researchers systematically track, quantify, and analyze permafrost landscape change across the Arctic. The dataset is also available as a [data layer](#) on the Permafrost Discovery Gateway portal, where you can further explore its impact.

Read Article

Link to Dataset

Other Opportunities

North Central Climate Adaptation Science Center Webinar

**CIRES/Environmental Data Science Innovation and Impact Lab (ESIL) Post-
Doctoral Research Scholar**

Geospatial Data Scientist at Maxar

Atmospheric Scientist at Boeing

**Senior Geothermal Research Scientist at National Renewable Energy
Laboratory.**



You received this email because you signed up on our website or
have submitted data to the Arctic Data Center.

[Unsubscribe](#)