



Hello August! The Arctic Data Center has been processing lots of data and we hired four new data team interns to help, featured Melissa Ward Jones and the Cyber2A project on our blog, and so much more. Read on for more information, new paper releases, and additional events to attend!

## Introducing our data interns!



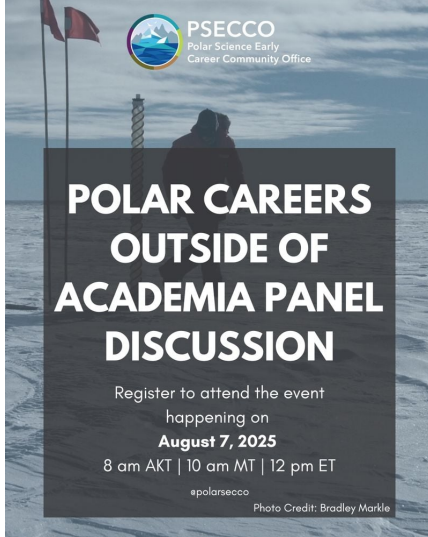
Our data curation teams usually consists of two individuals, Maggie Klope and Justin Kadi, who split their time on processing data for the Arctic Data Center and helping out other NCEAS-housed projects. Hsinpin Wen has been working with us for an extended period time and we appreciate all the efforts she's poured into helping our team. Working alongside Hsinpin, we have four new data interns to help our data curation team process all of our incoming datasets. We appreciate all of the behind the scenes work our team does to help researchers get their data ready to publish on the repository.

---

August 2, 2025

### **Polar Careers Outside Academia Panel Discussion**

Are you an early career researcher interested in career pathways outside of the classic academic route?



PSECCO is bringing together four panelists to discuss their varied career pathways on August 7th from 10am to 11am MT. Learn more about [this event](#) and how to register at the link below!

[Register for Panel](#)

### July Dataset Highlight

#### New Dataset Explores Permafrost Coastline Erosion Dynamics at Drew Point, Alaska

Dr. Melissa Ward Jones has been deeply involved in Arctic research for many years focusing on various research initiatives such as the impacts of melting ice-rich landscapes like permafrost. This thaw leads to ground subsidence, coastal erosion, and many other significant landscape changes which she is a topic she explores more in her work. Many of her datasets can be found in the Arctic Data Center, be sure to [check them](#) out!

She also stewards the [Permafrost Grown](#) project, which investigates the interactions and feedbacks within permafrost agroecosystems. We'll be featuring it next month in our dataset highlight, so stay tuned!



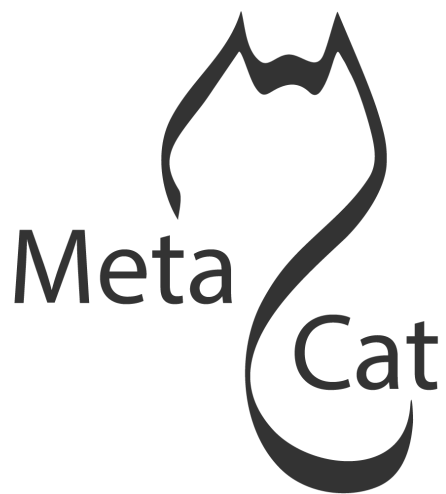
[Read Dataset Highlight](#)

July 2, 2025

#### Metcat 3.2.2 Release

Metacat is the core software powering the Arctic Data Center repository, and our software developers recently upgraded to version 3.2.2. This new release resolves several previous bugs and includes new enhancements





such as utility scripts in Python and Bash for Metacat administrators. You can learn more in depth about these upgrades in the [release notes](#). If ever curious about Metacat, please feel free to reach out!

[Read more about Metacat](#)

July

### **Collaborator Highlight: Cyber2A**

Collaboration is central to our work at the Arctic Data Center, whether it be among researchers who submit data or large-scale projects. The NSF-funded Cyber2A project is a collaboration between Arizona State University, Woodwell Climate Research Center, the Arctic Data Center, and the National Center for Supercomputing Applications where together, we aim to expand the Arctic-AI research network. Much of this is done by developing training materials, hosting webinar events, and building a scalable learning community. Read more about it in our latest [blog post](#)!



[Read Collaborator Highlight](#)



Applications close on August 22, 2025

### **IARPC Collaborations Mentorship Program**

The IARPC Collaborations Mentorship Program is open to anyone in the Arctic and Antarctic research community at all career stages and paths. You do not have to be a scientist or actively researching/publishing to participate in the program. It offers space for small groups to connect, share experiences, support one another through career transitions, and grow as leaders.

The 2025–26 program runs from September 2025 to May

2026, beginning with a kickoff meeting on September 10 at 11am AKT. Monthly group meetings will follow. This year's program is offered in partnership with Polar Science Early Career Community Office ([PSECCO](#)) and the United States Association of Polar Early Career Scientists ([USAPECS](#)).

[Link for details and registration](#)

## Partner News & Opportunities

### Cyber 2A Webinar Series

A promotional poster for the Cyber2A Webinar Series. The background is a satellite map of a coastal area. In the top left is the 'AI Cyber2A Arctic Science' logo. In the top right are logos for 'Permafrost Discovery Gateway', 'NSF', and 'Google.org'. The center text reads 'CYBER2A WEBINAR SERIES' in a yellow box, followed by 'AUGUST 18, 2025 10-11AM PDT' in a black box. Below this is the title 'Semantic Enrichment and LLM-Driven Analytics to the Mindat Open Data Portal' in large yellow letters. On the left is a portrait of Dr. Xiaogang Ma. To his right is his name and title: 'Dr. Xiaogang Ma, Associate Professor of Computer Science, University of Idaho'. At the bottom left is a yellow arrow pointing to a registration link: 'Register: https://cyber2a.github.io/webinar-registration'. At the bottom right is a QR code. A small credit line at the very bottom right says 'Photo credit: Benjamin Jones'.

The Cyber2A team invites you to a webinar on August 18, 2025, from 10–11 AM PDT, featuring Dr. Xiaogang Ma, who will share how semantic technologies and large language models (LLMs) are transforming Mindat, the world's largest open mineral database. Learn how these tools are improving data quality, enabling FAIR-compliant APIs, and powering new features like natural-language queries, synonym resolution, and interactive visualizations all designed to support transparent and reproducible geoscience research. To learn more about the project and their webinar series, please visit [here](#).

[Register for Webinar](#)





# New Paper Releases

## **Predictive links between microbial communities and biological oxygen utilization in the Arctic Ocean**

In this recently published study, [data](#) from the Arctic Data Center is used to help understand how microscopic marine life in the Arctic influences oxygen and carbon levels in the ocean. By combining DNA sequencing and machine learning, researchers uncovered patterns in microbial communities that help predict biological activity, offering new tools to better understand and model Arctic ecosystem changes.

[Read Article](#)

[Link to Dataset](#)

---

## **National Weather Service Alaska Sea Ice Program: gridded ice concentration maps for the Alaskan Arctic**

Accurately measuring sea ice in the Arctic is difficult, especially during melting periods and in areas with low ice concentration. This study introduces a new sea ice product for the Alaskan Arctic that combines satellite and in situ data from various datasets, including some from the Arctic Data Center. The results from this product show it performs better than existing products in challenging conditions like active melt and near the ice edge. The following data from three Arctic research cruises are all available through the Arctic Data Center:

- [The 2016 CCGS Sir Wilfrid Laurier cruise](#) (Moore, 2019a)
- [The 2017 USCGC Healy cruise](#) (Moore, 2019b)
- [The 2014 USCGC Healy cruise from the Study of Under Ice Blooms in the Chukchi Ecosystem](#) (Polashenski, 2016)

[Read Article](#)

---

## Other Opportunities

**[Job - ARCTIC Program Architect at Alaska Center for Energy and Power](#)**

**[Job - CIRES/ESIIL Professional Assistant](#)**

**Postdoctoral Researcher in Arctic Boreal Fire Management at Woodwell Climate Research Center**

**Postdoctoral Researcher in Atmosphere, Cryosphere, & Hydrosphere Interactions at the University of Oulu**

**Arctic Together Podcast: Episode 7**

**30th Anniversary Polar Libraries Colloquy**

The Byrd Polar and Climate Research Center is accepting abstracts for the 30th Anniversary Polar Libraries Colloquy to be held in Columbus, Ohio in June 2026. This event brings together librarians, archivists, historians, scientists, educators, and others. Learn more about the event and submit an abstract at <https://osu.az1.qualtrics.com/...>

**Applications for the Saroma Sea Ice School 2026**

The Saroma Sea Ice School is a interdisciplinary winter field school in Hokkaido, Japan (Feb 28–Mar 9, 2026) brings together early-career researchers (primarily Ph.D. students, but also open to master's students and early postdocs) to study polar climate systems through lectures, expert-led workshops, and fieldwork on sea ice, snow, clouds, and aerosols. Organized by BEPSII, CATCH, and ClceClouds, the program prepares participants for international initiatives like Antarctica In Sync and the International Polar Year.

Application deadline: September 30, 2025. [Apply here](#).

---



You received this email because you signed up on our website or have submitted data to the Arctic Data Center.

[Unsubscribe](#)