



April was busy at the Arctic Data Center! We've started analyzing feedback from our 2026 Community Survey and we thank those who took time to provide thoughtful suggestions for our future goals. We're excited to turn that feedback into actionable items! This month's newsletter includes a recap of our recent data science training and a spotlight on a social science dataset co-authored by two of our own Science Advisory Board (SAB) members. We also just closed our nominations for new SAB members, and we'll be reviewing all submissions and reaching out soon. Stay tuned and read on for more details!

### Newsletter At a Glance

- Dataset Highlight: Reframing Salmon Management Through Indigenous Perspectives
- Building Data Science Skills for Arctic Researchers: Recapping our 2026 Virtual Training Course
- Latest Datasets
- Upcoming Opportunities and Events
- New Paper Releases



#### New Dataset Highlight

### Reframing Salmon Management Through Indigenous Perspectives

Our newest Dataset Highlight includes a conversation with Dr. Jessica Black and Dr. Courtney Carothers on their Indigenizing Salmon Management Interviews dataset. [Read more](#) to learn about the meaningful stories behind this [dataset](#).

[Read Dataset Highlight](#)

## Building Data Science Skills for Arctic Researchers: Recapping our 2026 Virtual Training Course

Our five-day virtual training course, *Reproducible Approaches to Arctic Research Using R*, brought together 18 researchers this April to build on their data science skills. This recap highlights a new lesson on data quality and reuse along with a reflection on our data science training program's future. You can also find the open access [curriculum online!](#)



[Read our Recap](#)

## Latest Datasets

[Explore the full catalog](#)

Explore some of the latest datasets uploaded to the Arctic Data Center, ranging from geoscience to atmospheric science.



### Geoscience

*Romanovsky et al., 2026*

This dataset contains aerial imagery and surface elevation models of a tundra site near Deadhorse, Alaska, collected annually by drone to track landscape changes and ground deformation linked to permafrost monitoring research.

[View Dataset](#)



### Oceanography & Zoology

*Ashjian et al., 2026*

This dataset features zooplankton abundance measurements collected near Point Barrow, Alaska, and examines how rapid environmental changes are affecting prey availability and migration patterns of bowhead whales along the Beaufort Shelf.

[View Dataset](#)



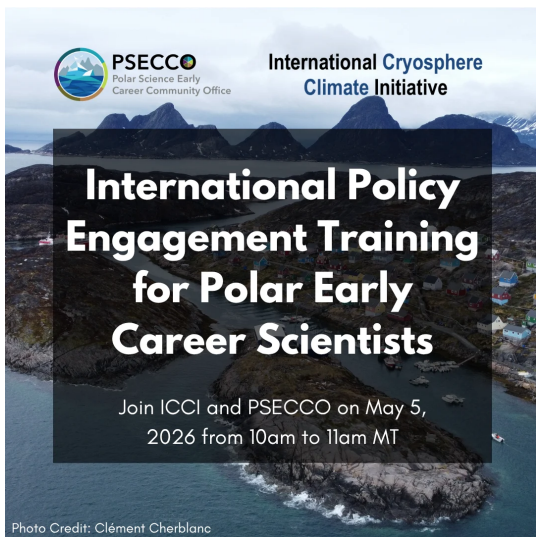
### Ecology

*Gaglioti, 2026*

This dataset documents how recently burned areas in Alaska's boreal forests act as a natural brake on wildfire spread. It captures a self-regulating feedback that has historically kept burn rates significantly lower, which weakens during extreme fire weather.

[View Dataset](#)

# Partner News & Opportunities



Tuesday, May 5 at 8am AKT | 10am MT | 12pm ET

## Join PSECCO and ICCI online for an 'International Policy Engagement Training for Polar Early Career Scientists'!

Are you interested in learning how to engage in the international policy space? The Polar Science Early Career Community Office is excited to be partnering with the International Cryosphere Climate Initiative (ICCI) to host a training designed to inform polar early career scientists on ways to participate in the international climate policy space.

To register for this workshop, visit this [webpage](#).

Register for Event

## NCEAS 2026 Seminar Series

### Environmental Data Science and Its Impacts on Communities and Ecosystems

NCEAS is hosting the sixth segment of their popular annual Seminar Series this spring! This year's theme is "*Environmental Data Science and Its Impacts on Communities and Ecosystems*," and the speaker lineup has been announced. Visit their [Annual Seminar Series](#) page to learn more about each of the webinars and [register](#).

Register for Seminar Series

THE NATIONAL CENTER FOR ECOLOGICAL ANALYSIS AND SYNTHESIS PRESENTS OUR 2026 SEMINAR SERIES

**ENVIRONMENTAL DATA SCIENCE AND ITS IMPACTS ON COMMUNITIES AND ECOSYSTEMS**

May 1, 2026 at 12pm PDT  
**Abre' Conner**  
NAACP  
UTILIZING A FRONTLINE COMMUNITY FRAMEWORK FOR DATA CENTER POLICIES

May 27, 2026 at 12pm PDT  
**Cesar Estien**  
SECOND NATURE ECOLOGY AND DESIGN  
YESTERDAY'S TOMORROW: EXPLORING HOW SOCIETAL INEQUITIES SHAPE THE ECOLOGY OF CITIES

June 11, 2026 at 12pm PDT  
**Patricia Balvanera**  
NATIONAL AUTONOMOUS UNIVERSITY OF MEXICO  
PLURAL SYNTHESSES OF KNOWLEDGE TO SUPPORT MORE JUST AND SUSTAINABLE FUTURES

Zoom Registration: [nceas.ucsb.edu/seminar-series](https://nceas.ucsb.edu/seminar-series)

## Join the NNA-CO for virtual evaluation focus sessions

Session 1: May 5, 2026 12:00 - 1:00 pm MT  
Session 2: May 20, 2026 1:00 - 2:00 pm MT

May 5 at 12pm MT & May 20 at 1pm MT

### NNA-CO Evaluation Focus Sessions

Join the NNA-CO this spring for virtual evaluation focus sessions that will inform the upcoming NNA evaluation and synthesis report. These sessions will consist of an overview of topics, questions, and methods planned for the comprehensive report, as well as time for participants to share and learn from others who are implementing evaluations of NNA-funded projects.

The focus sessions will take place on two different dates:

May 5, 2026 from 12:00 pm MT to 1:00 pm MT |

Find more information [here](#)

May 20, 2026 from 1:00 pm MT to 2:00 pm MT |

Find more information [here](#)

Register for the Events

### QGreenland Engagement Survey

#### Do you use QGreenland in your studies, teaching, work or research?

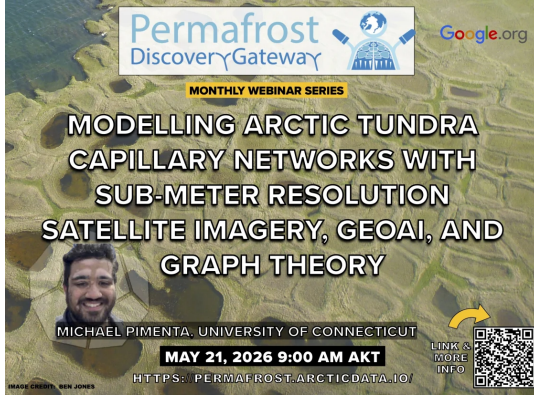
We would love to feature your work as a QGreenland user on our website to inspire other users! To be featured, please fill out [this very short Google form](#) and we will get back to you to schedule a very short interview regarding how you've found QGreenland to be most useful in your studies, teaching, work or research context!

The survey **should take three minutes or less** to complete.

Take the Survey

#### Share a case study with us of how you use QGreenland!





## Modelling Arctic Tundra Capillary Networks with Sub-meter Resolution Satellite Imagery, GeoAI, and Graph Theory

Join the Permafrost Discovery Gateway's webinar on **May 21** as Michael Pimenta explores how tundra capillary networks are reshaping Arctic landscapes. Using a scalable AI-powered mapping tool across approximately 1 million km<sup>2</sup> of Alaskan tundra, they detected over 2.7 million km of these drainage networks.

To see the full webinar details and Zoom link, visit the [PDG Stay Connected](#).

Webinar Info



Session proposals close on May 31, 2026 at 11:59pm MT

### 2026 NNA Annual Community Meeting

The **2026 Navigating the New Arctic (NNA) Annual Community Meeting** will be **September 15–17** at the University of Alaska Fairbanks. The meeting is hoping to bring together NNA researchers, Arctic Indigenous community representatives, decision-makers, and partners to share research outcomes and explore future collaborative opportunities.

**Interested in leading a session?** Submit a [session proposal](#) by May 31, 2026 (11:59pm MT). A call for oral and poster presentations will open in July.

Registration for Community Meeting

## New Paper Releases

[A first approach towards dual-hemisphere sea ice reference](#)

## **measurements from multiple data sources repurposed for evaluation and product intercomparison of satellite altimetry**

This study by Olsen et al. covers a collection of sea ice reference measurements designed to validate satellite-based estimates of sea ice thickness across both polar regions. Using data spanning the full satellite altimetry era (1993–2024), their work provides a publicly available tool for improving the accuracy of sea ice monitoring from space. Read more in the [full article](#).

Read Article

## **Long-Term Regional Hydroclimate Modeling for Communities and Decision-makers Across Alaska and Northwestern Canada**

This study by Newman et al. developed a high-resolution climate model for Alaska and northwestern Canada, which includes input from Indigenous community members. Their model produces detailed projections of how the region's water cycle could shift through the mid-21st century, and offer a range of future climate scenarios to support local decision-making. The code and model output are archived at the Arctic Data Center. Read more in the [full article](#).

Read Article

---

## **Other Opportunities**

### **Job Opportunities**

- Head of Geoscience Department, Arctic Norway (<https://workforcenow.adp.com/m...>)
- Geohazard Visualization and Communication fellow at Alaska Climate Adaptation Science Center (<https://alaskafellows.org/appl...>)

### **Postdoc Opportunities**

- PhD opportunity in Arctic sea ice (<https://web103.reachmee.com/ex...>)
- 3-year Postdoc position in remote sensing of Arctic and Antarctic sea ice in Norway (<https://www.jobbnorge.no/ledig...>)

### **Conferences and Workshops**

- Glacial Sedimentation School 2026 at Oregon State University, July 13-17, 2026 (<https://www.cognitofrms.com/O...>)
  - 2026 NNA Annual Community Meeting in Fairbanks, Alaska, September 15-17, 2026 (<https://nna-co.org/outreach/wo...>)
-

[Browse Past Newsletters Here](#)



You received this email because you signed up on our website or have submitted data to the Arctic Data Center.

[Unsubscribe](#)